



PAULDING COUNTY

GEORGIA

EXPLORE · UNWIND · THRIVE

Paulding County ITS Expansion System (Phase 1-P.I. 0013147 & Phase 2-P.I. 0013148)

Phase 1 - P.I. 0013147

- ▶ Establish a TCC in the existing Traffic Operations Division Building
 - ▶ Renovations to space in the existing Traffic Operations Building
 - ▶ Installation of communications equipment and a video display system
- ▶ Included the first phase of a field communication system
 - ▶ 144 pair fiber optic cable was installed along Dallas-Acworth Highway, E. Paulding Drive, SR 120 and Bill Carruth Parkway to 17 signalized intersections
 - ▶ CCTV cameras that are PTZ cameras provided at each signalized intersection

Paulding County ITS Expansion System (Phase 2-P.I. 0013147 & Phase 2-P.I. 0013148)

Phase 2 - P.I. 0013148

- ▶ Installation of the second phase of a field communications system
 - ▶ 144 pair Fiber optic cable installed from the TCC and extend along Industrial Way North, Industrial Boulevard, East Memorial Drive, SR 6 Business, SR 6, SR 92, and SR 360 to connect to 27 intersections.
 - ▶ CCTV cameras that are PTZ cameras provided at each signalized intersection

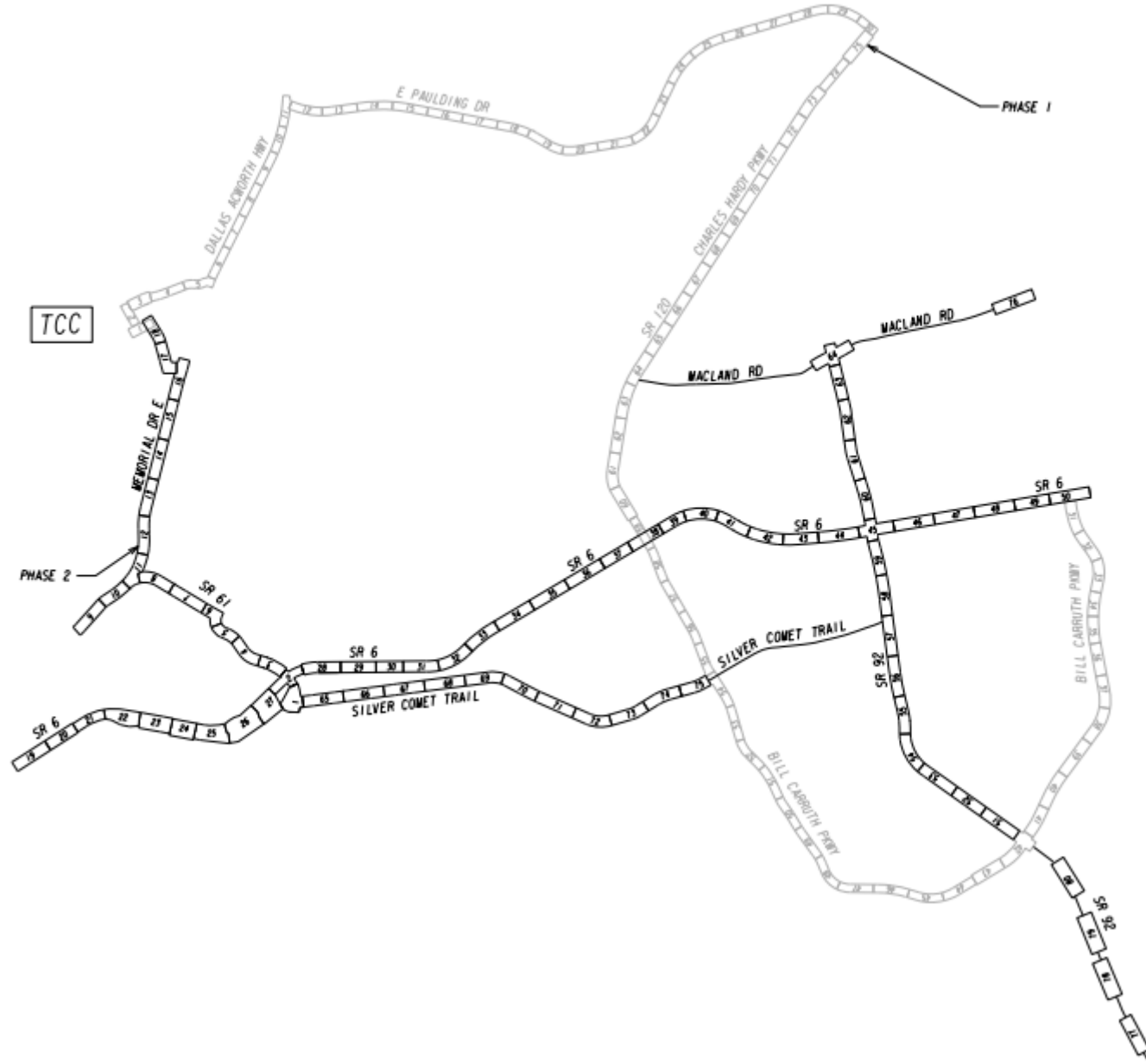
Phase I Fiber

OVERALL SHEET LAYOUT
N. T. S.

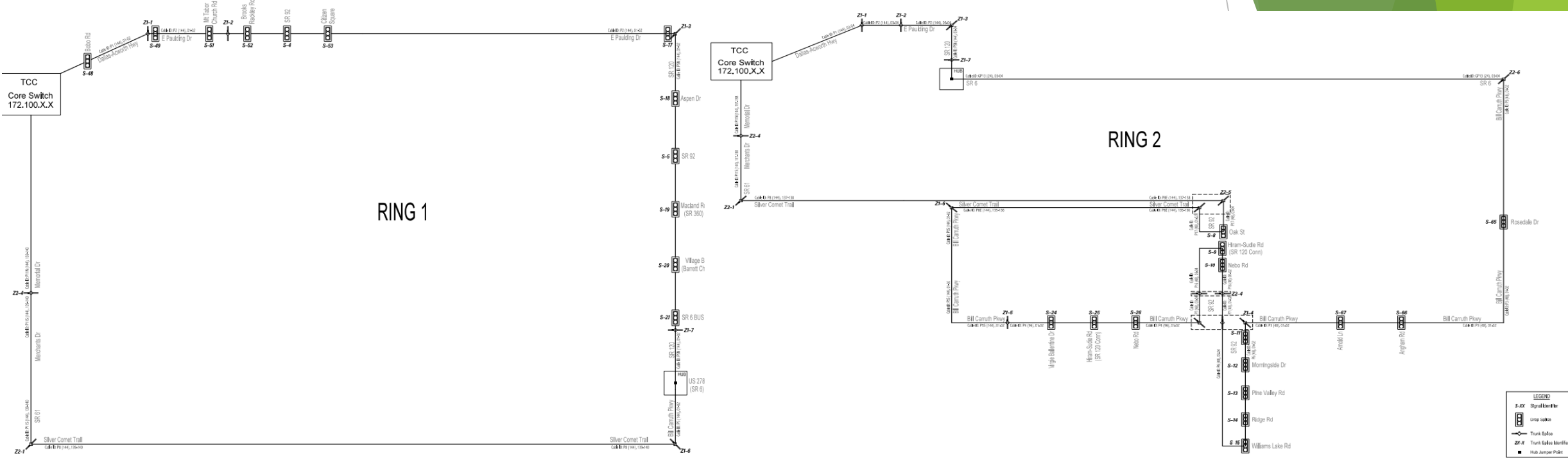


Phase II Fiber

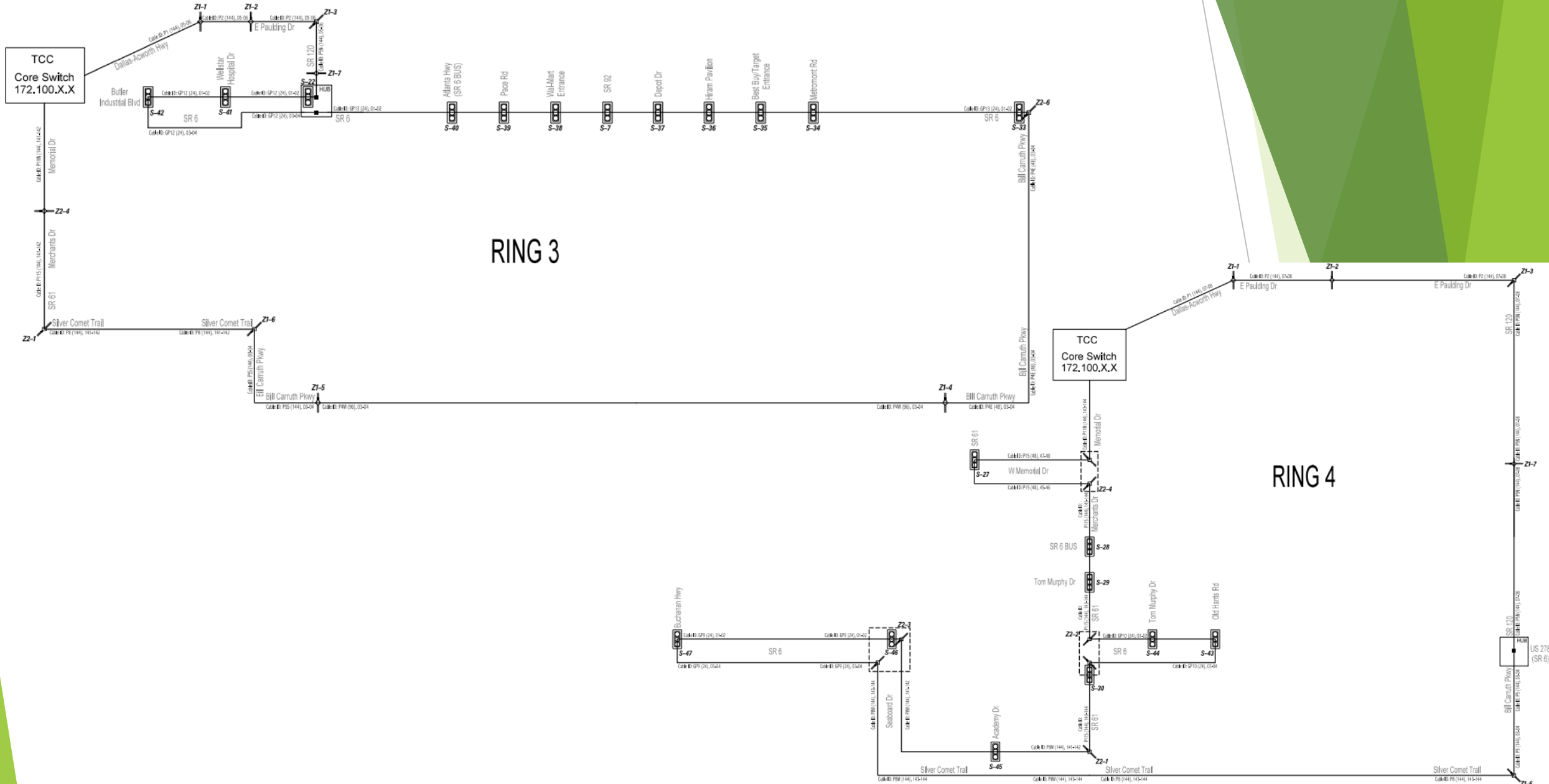
OVERALL SHEET LAYOUT
N. T. S.



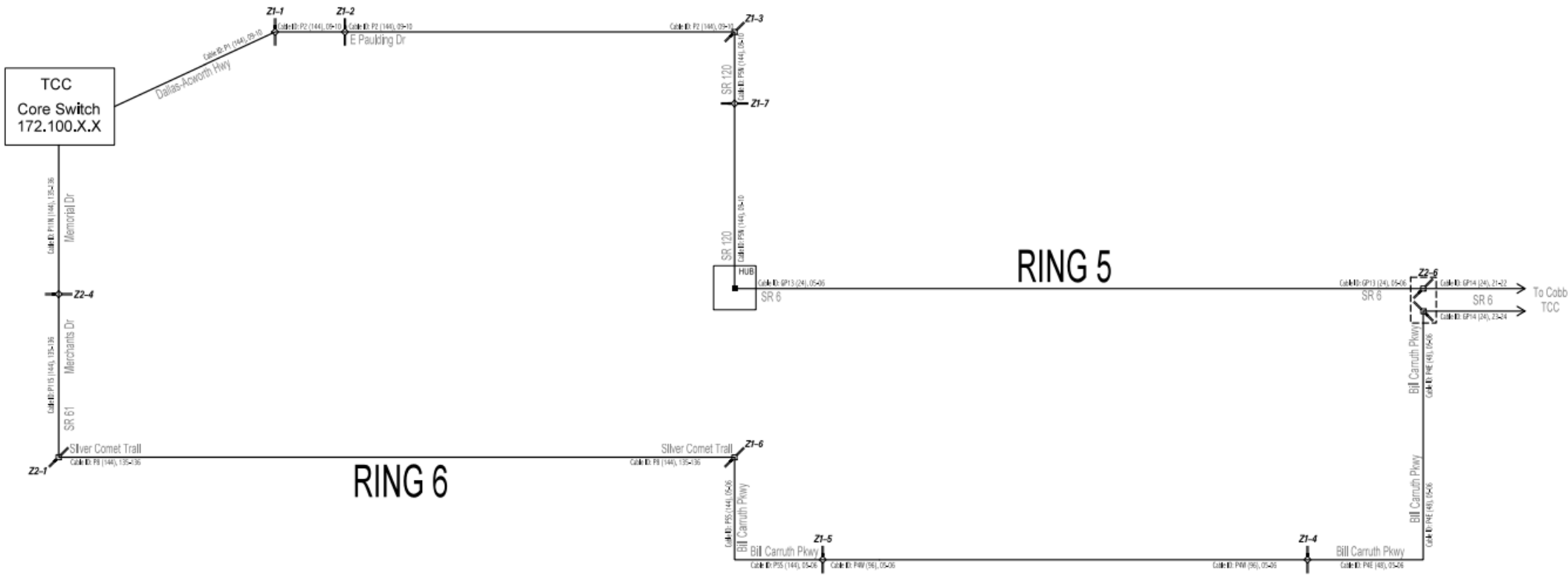
Fiber Ring Structure



Fiber Ring Structure



Fiber Ring Structure



ITS Fiber Installation



Paulding Traffic Control Center (TCC)

► Demolition Phase



Paulding Traffic Control Center (TCC)

► Construction Phase



Paulding Traffic Control Center (TCC)

- Completion

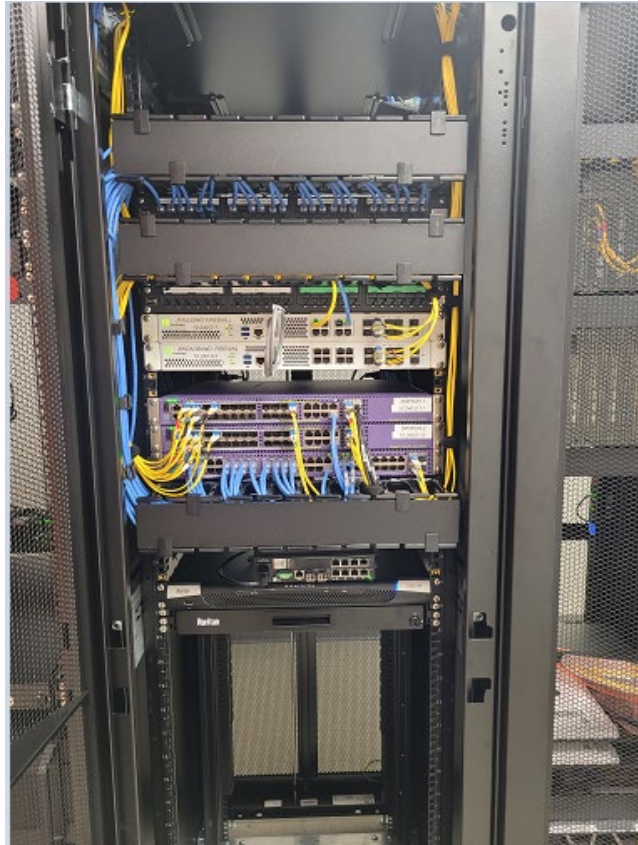


Paulding Traffic Control Center (TCC) Cinemassive Display Wall



Paulding Traffic Control Center (TCC)

- Completion - Data Room



Next Steps

- ▶ Get direct fiber connection to GDOT TMC
 - ▶ BB&H is working on 2 sections of fiber in Cobb County to provide direct connection
- ▶ Get new Navigator (Kapsch) Server from GDOT installed and running

Questions?

