



I-16 BRIDGE INCIDENT GDOT RESPONSE



I-16 BRIDGE INCIDENT - GDOT RESPONSE

Route Description:

SR 86: AADT 270 vehicles

At the incident location is a two (2) lane state highway (approximately 51 miles) It begins southeast of East Dublin, crosses over Interstate 16 (but does not interchange) to its terminus with US 280/SR 30.

Interstate I-16: AADT 17,600 vehicles

At the incident location is a four (4) lane east –west Interstate Highway (approximately 167 miles). It travels from Macon to Savannah.

I-16 BRIDGE INCIDENT GDOT RESPONSE

July 15th, 1:03 AM
I-16 at SR 86







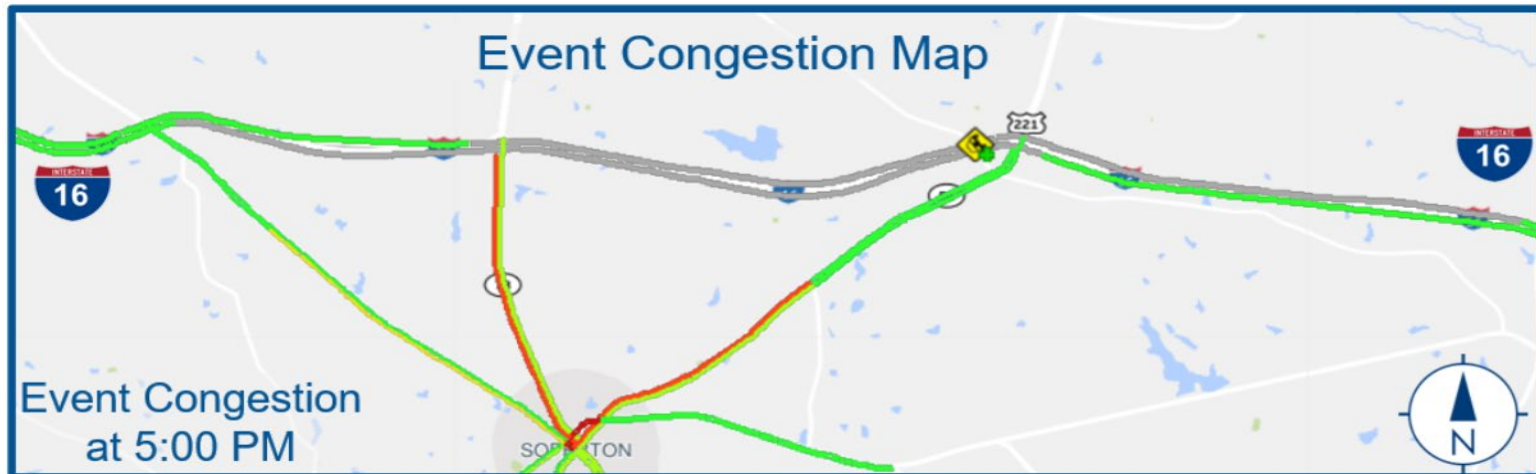
I-16 BRIDGE INCIDENT GDOT RESPONSE

- At 1:27 AM, Georgia State Patrol advised that the bridge was hit and both EB and WB lanes were blocked. CHAMP was also requested to assist with traffic control.
- At 1:36 AM GDOT Emergency Ops and upper Management were notified.
- At 1:39 AM, the State Bridge Group was notified via Teams and phone calls and the Acting State Bridge Maintenance Engineer was also notified.
- AT 1:46 AM a Georgia Alert was circulated and overhead CMS signs were included to notify motorists nearby.
- At 2:15 AM the maintenance foreman arrived on scene.

I-16 BRIDGE INCIDENT GDOT RESPONSE

- Between 2:00-3:30 AM Local District maintenance staff placed portable arrow boards on I-16 East and West prior to incident location to close 1 lane and force an exit.
- By 3:00 AM State Bridge staff were on site to evaluate
- By 7:30 AM 10 portable message boards had been placed near Adrian and Soperton to direct drivers for the Detour route back to I-16.
- Between 7:30 – 8:30AM Contractors arrived on site, Decision to repair or remove bridge was discussed.
- By 9:00 AM GDOT was formulating initial signal timing adjustments.
- By 1:00pm permanent detour signs were in place for i-16 detour.
- Between 3:00- 4:00 PM TMC was adjusting signal timing in Soperton and Adrian based on increased volume.

I-16 BRIDGE INCIDENT GDOT RESPONSE



DETOUR ON I-16

Westbound detour:

Take Exit 78- Turn Right onto Highway 221 North, Left onto US 80 West, go through town of Adrian, Left onto State Route 15, Re-Enter I-16 at Exit 71

Eastbound detour:

Take Exit 71 – Turn Right onto Highway 15, through Soperton, Left onto State Route 46, Left onto State Route 56, Re-Enter I-16 at Exit 78

I-16 BRIDGE INCIDENT - GDOT RESPONSE

- At 9:00 PM on Thursday July 15th, Contractor and GDOT crews commence bridge demolition and debris removal.
- At 2:15 AM on Friday, July 16th, the bridge structure had been demolished and debris was being removed.
- At 5:00 PM on Friday, July 16th, The Westbound lanes were back open. Followed a few hours later by the Eastbound lanes.
- At 8:13 PM, the GA Alert had been cancelled and all the DMS signs were removed. The incident was cleared at 8:39 PM.

I-16 BRIDGE INCIDENT - GDOT RESPONSE

Impact:

- Impact to nearby small and rural cities
- Commercial delays at coastal ports
- 15 minutes ride to 45 minutes ride

Event Statistics



1

Vehicle
Involved



0

Injuries



16.4M

Facebook
& Twitter
Impressions



\$49.5k

User Delay
Cost

I-16 BRIDGE INCIDENT - GDOT RESPONSE

STRATEGY DEPLOYED:

INTER-AGENCY COLLABORATION

Coordination with:

- Georgia Emergency Management Administration (GEMA)
- Federal Highway Administration (FHWA)
- GDOT Traffic Management Contractors
- Emergency Operations Center (EOC)
- GDOT Commissioner and Transit Authorities
- Port Authorities

TRAVEL INFORMATION

The use of 511 system, website, Facebook, Twitter, Waze, Google Maps applications and Overhead Changeable Message Signs (CMS)

Resources Employed:

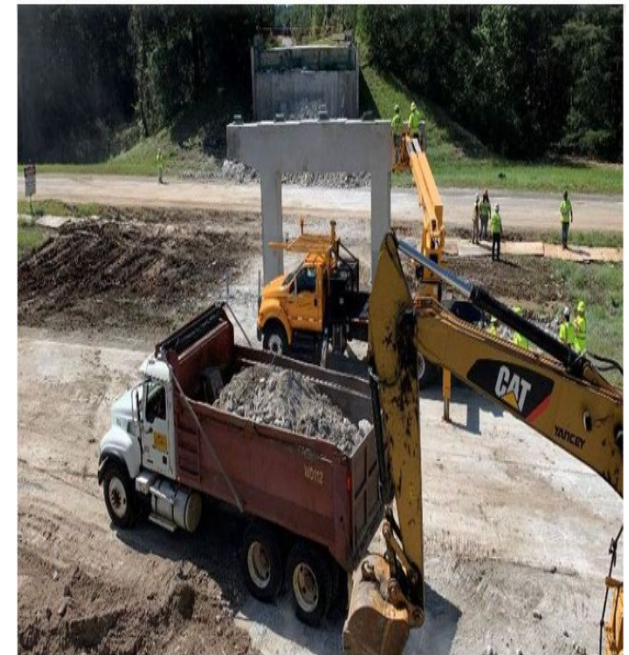
Manpower:

Traffic Control; Sign Maintenance; Material Handling; Bridge Maintenance; Roadway Maintenance

- GDOT - 112 employees, 2900 man hours
- Contractor - 58 employees
- 42 Hours of operation

Equipment:

Message Boards; Loaders, Signs, Dozer, Grader, Dump Truck; Bucket Truck, Cones, Barricades, Drums; Lights





I-16 BRIDGE INCIDENT GDOT RESPONSE





I-16 BRIDGE INCIDENT GDOT RESPONSE



I-16 BRIDGE INCIDENT GDOT RESPONSE



I-16 BRIDGE INCIDENT - GDOT RESPONSE



I-16 BRIDGE INCIDENT - GDOT RESPONSE



Questions?

