



RENEWING ATLANTA

Troy Galloway

ITS Georgia

March 28, 2018

GOAL

Provide for safe, efficient vehicular and pedestrian event flow and minimize impacts to neighboring communities by leveraging available infrastructure and technology through collaborative partnerships –

- with recognition that Downtown Atlanta plays host to numerous special events, often occurring in an overlapping manner across multiple venues and facilities.

This process involves resources & communication between agencies:

- Organizational / management collaboration
- Technology
- Cultural shifts

SPECIAL EVENTS COMMITTEE

AmericasMart

Atlanta Regional Commission

Atlanta Football Host Committee

Atlanta Falcons

Atlanta Hawks

Central Atlanta Progress (ADID)

City of Atlanta, Department of Public Works

City of Atlanta, Police Department

City of Atlanta, Renew Atlanta Bond / TSPLOST Program

Georgia Department of Transportation

Georgia Tech

Georgia World Congress Center

Invest Atlanta

Jacobs (DTOP)

Kimley-Horn Associates

MARTA

Mercedes Benz Stadium

Philips Arena

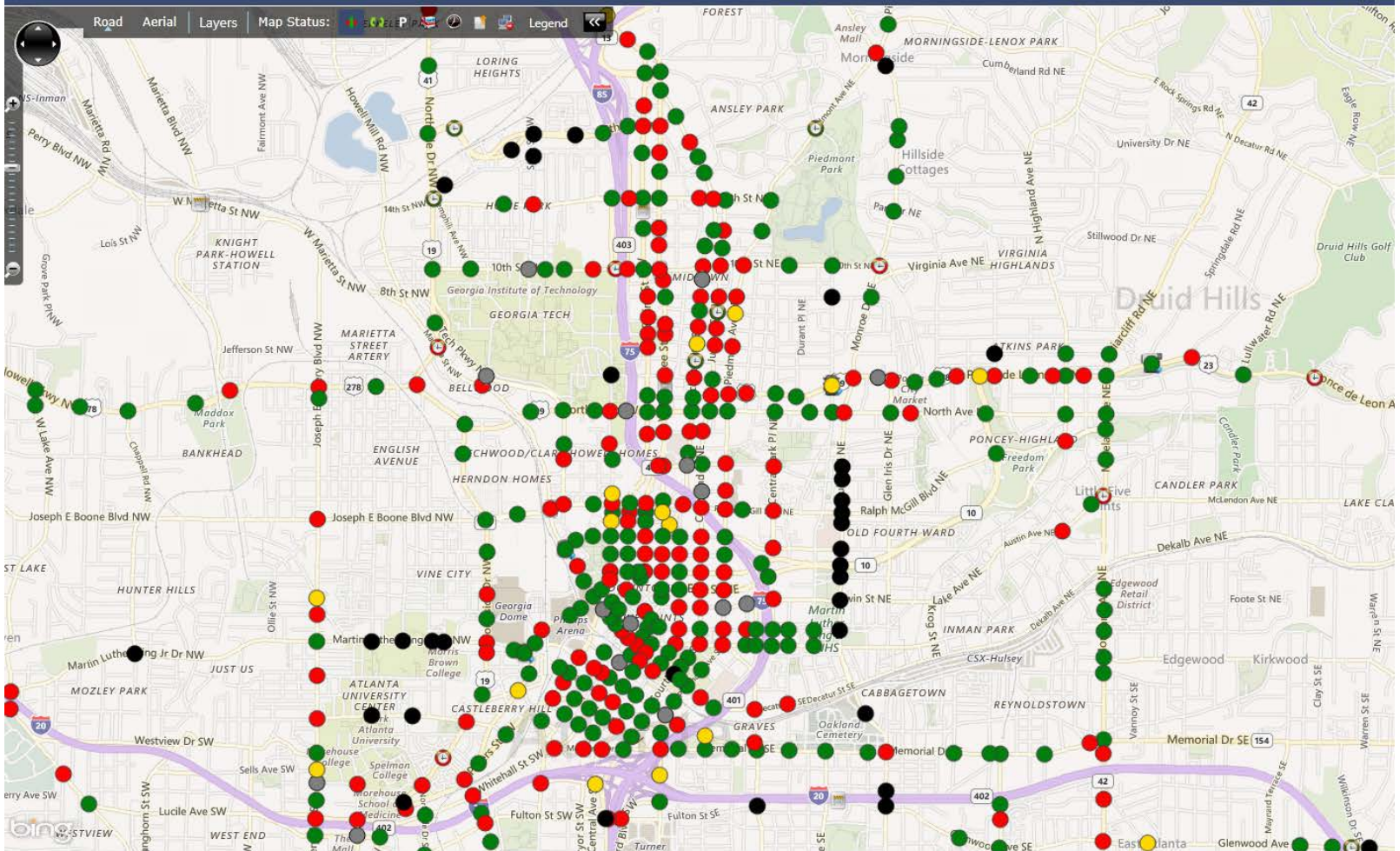
OBJECTIVES

Two parallel tracks: **The Sprint and the Marathon**

- The Sprint: August 26
 - Atlanta Falcons Pre-Season
 - Readyng Infrastructure Improvements
 - Deployment of Traffic Management Strategy
 - Traffic Signal System + Technology + Partners
 - Observations & Tweaking of Strategies & Plans
 - Develop Draft Playbook
- The Marathon: January 8
 - CFB National Championship Game
 - Further Development and Refinement of the Playbook

SIGNAL CONNECTION

Active Alarms: 26 new unacknowledged alarms.



EYES IN THE SKY



Travel Info

Video courtesy of GDOT





Event Report: Monday, January 8, 2018



The following report presents the traffic condition statistics and network performance indexes with regards to the **CFN Championship** event at Mercedes Benz Stadium, on the **Monday, January 8, 2018** starting at **20:00:00** and ending at **00:00:00**

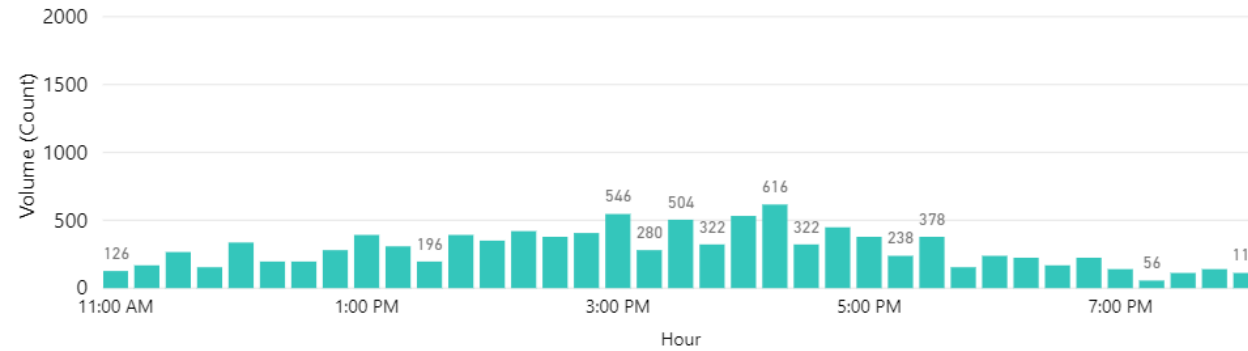
Total Event Ingress/Egress Volume	Max Ingress Volume:	Max Egress Volume:	Egress Complete at 2:30
11K	616 per 15 mins at 16:15	1428 per 15 mins at 00:00	(150 mins after event end)
Average NTT (Normalized Network Travel Time Mins/Miles) - Ingress	Average NTT - Egress		
7.58	7.30		



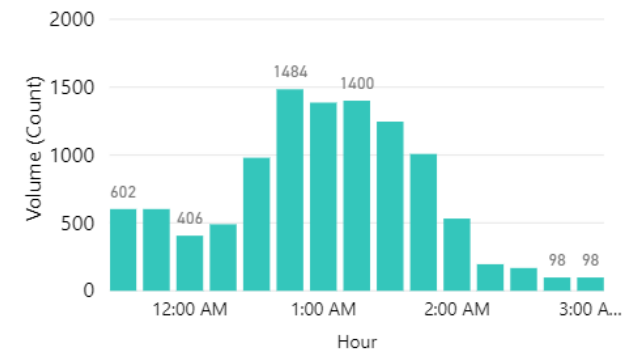
Total Event Ingress/Egress Volume

11K

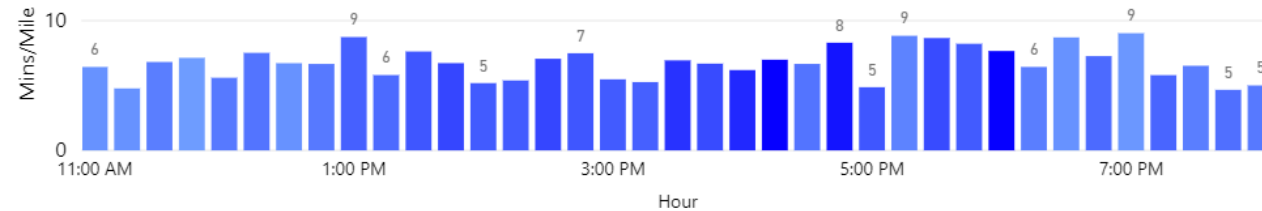
Volume per 15 mins - Ingress



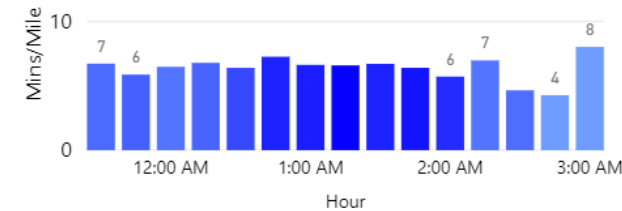
- Egress



Normalized Network Travel Time per 15 Mins - Ingress



- Egress

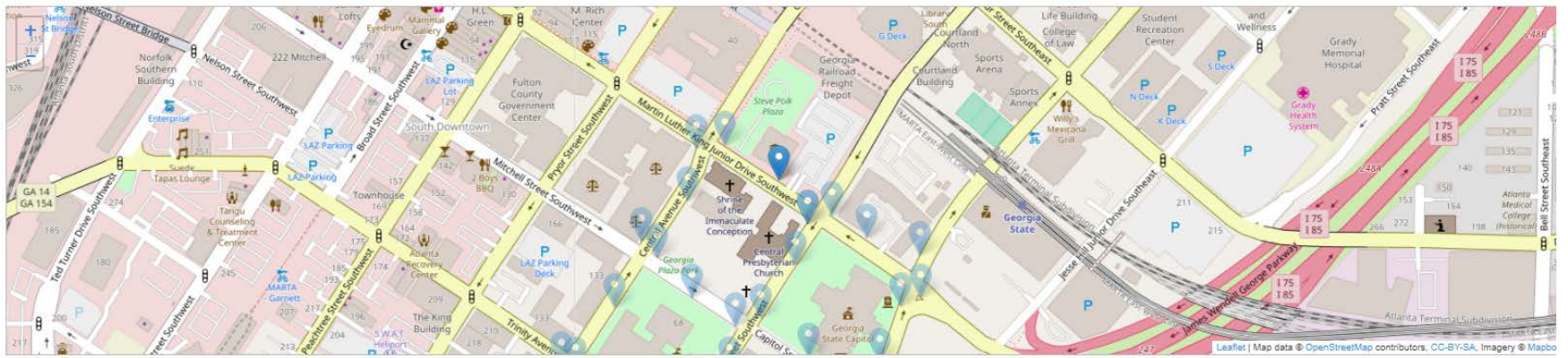




GE SMART NODES

CitySight

03/27/18 12:09:38 PM



Select a node to view camera video.

Camera 1 video on Mar 27th 2018, 12:07:38 pm



Camera 2 video on Mar 27th 2018, 12:07:38 pm



FUTURE TECHNOLOGY

