



Kimley»»Horn



Mercedes-Benz Stadium

College Football National
Championship
Traffic Operations



Sean Coleman, PE, PTOE

March 28, 2018

Partnership

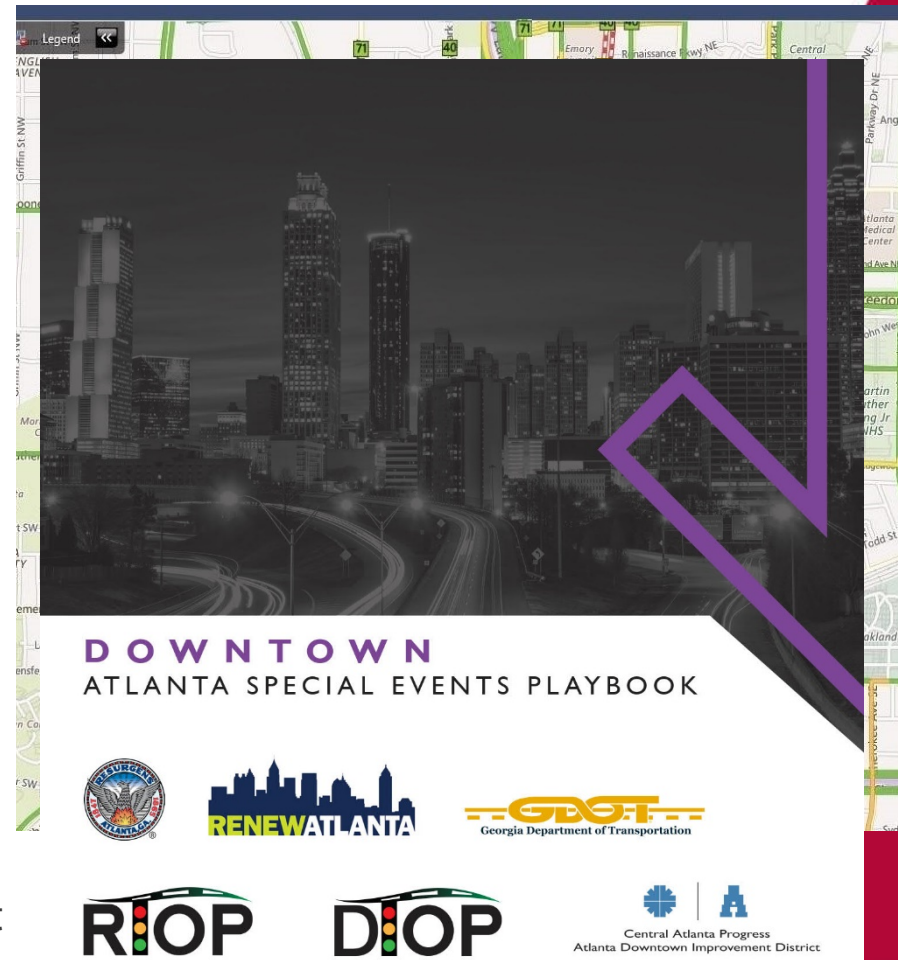


Central Atlanta Progress
Atlanta Downtown Improvement District



Preparation

- Development of Playbook
 - Began as planning effort with CAP
 - Evolved into full operations
 - Sprint – August 26, 2017 (Falcons Preseason Game – MBS Opener)
 - Marathon – Entire 2017 Falcons season, leading up to January 8, 2018 (CFB NC)
- GDOT / DTOP / RTOP
 - Prior to 2017
 - Limited special event timings
 - No coordination with Police and venues
 - Early 2017
 - MaxTime / MaxView Conversions
 - 4G Communication
 - Summer 2017
 - Tested special event timings in coordination with Police
 - Birthday Bash at Phillips Arena
 - Typical 90 minute egress cut to 45 minutes



Preparation

- Stakeholder Engagement
 - Mercedes Benz Stadium
 - Georgia World Congress Center
 - GWCC PD / APD



Preparation

- Stakeholder Engagement
 - Mercedes Benz Stadium
 - Georgia World Congress Center
 - GWCC PD / APD
 - GDOT (TMC, D7, Navigator)

I-75 SB BEFORE MT PARAN	CMS-012	MERCEDES BENZ STADIUM	21
		USE EXIT 252	12
		NORTHSIDE DR	12
	2ND PHASE 3RD ROW		0
I-75 SB S OF MOORES MILL	CMS-013	MERCEDES BENZ STADIUM	21
		EXIT 252 NORTHSIDE DR	21
		EXIT 249A COURTLAND	19
	2ND PHASE 3RD ROW		0

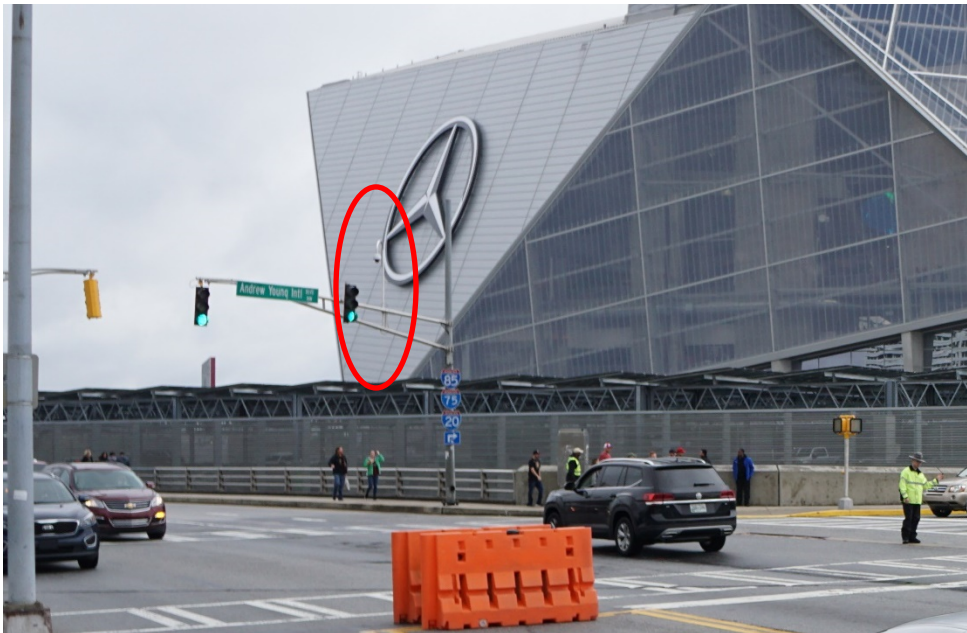
Preparation

- Stakeholder Engagement
 - Mercedes Benz Stadium
 - Georgia World Congress Center
 - GWCC PD / APD
 - GDOT (TMC, D7, Navigator)

I-75 SB BEFORE MT PARAN	CMS-012	ABANDON ALL HOPE YE WHO ENTER DOWNTOWN AFTER 2PM ON 01-08	21
			12
			12
	2ND PHASE 3RD ROW		0
I-75 SB S OF MOORES MILL	CMS-013	DON'T HAVE A TICKET TO GAME? STAY AWAY FROM DOWNTOWN!! AFTER 2PM ON 01-08	21
			21
			19
	2ND PHASE 3RD ROW	YOU'VE BEEN WARNED...	0

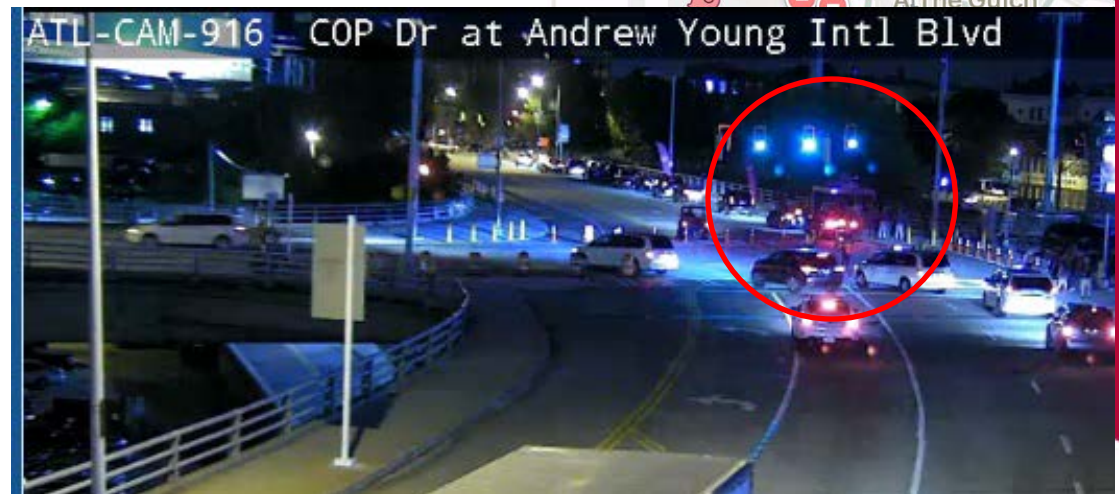
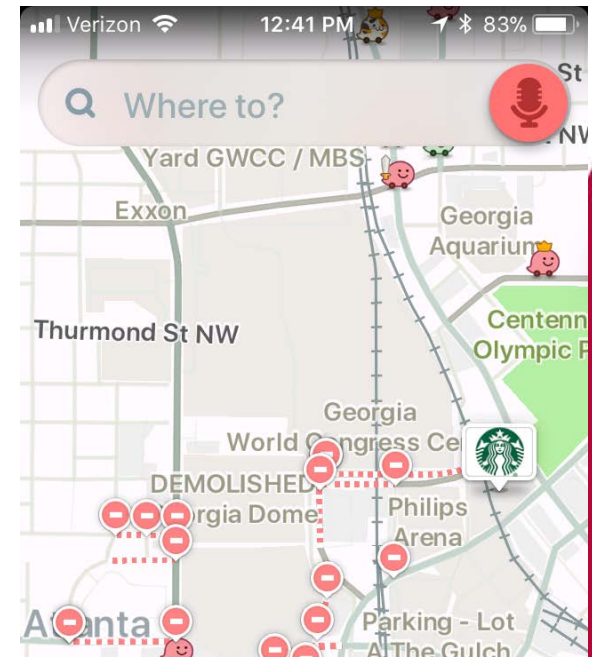
Preparation

- Stakeholder Engagement
 - Mercedes Benz Stadium
 - Georgia World Congress Center
 - GWCC PD / APD
 - GDOT (TMC, D7, Navigator)
 - Renew Atlanta



Preparation

- Stakeholder Engagement
 - Mercedes Benz Stadium
 - Georgia World Congress Center
 - GWCC PD / APD
 - GDOT (TMC, D7, Navigator)
 - Renew Atlanta
 - Atlanta Department of Public Works
 - Rideshare
 - Waze



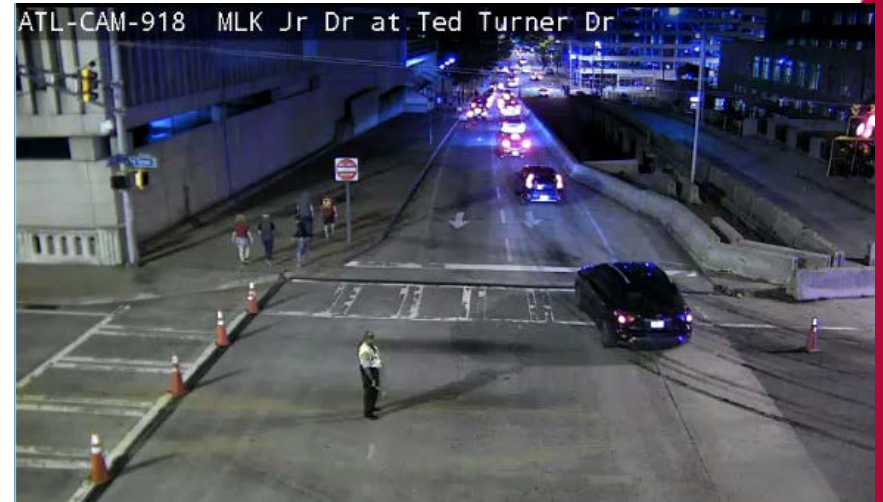
Preparation

- Stakeholder Engagement
 - Mercedes Benz Stadium
 - Georgia World Congress Center
 - GWCC PD / APD
 - GDOT (TMC, D7, Navigator)
 - Renew Atlanta
 - Atlanta Department of Public Works
 - Rideshare
 - Waze
 - Atlanta Host Committee

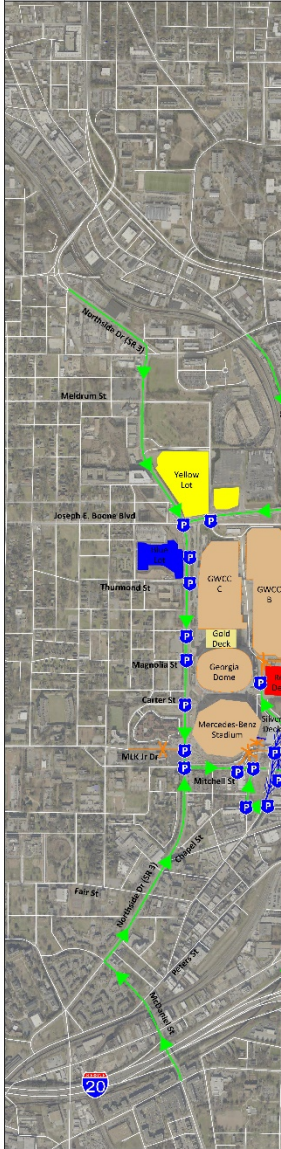


Preparation

- Traffic Plan Development
 - Officers work with traffic signal timing
 - Minimal signals in flash
 - Road Closures
 - Turn Restrictions
 - Contraflow Corridors
 - Police Locations
 - Rideshare Locations

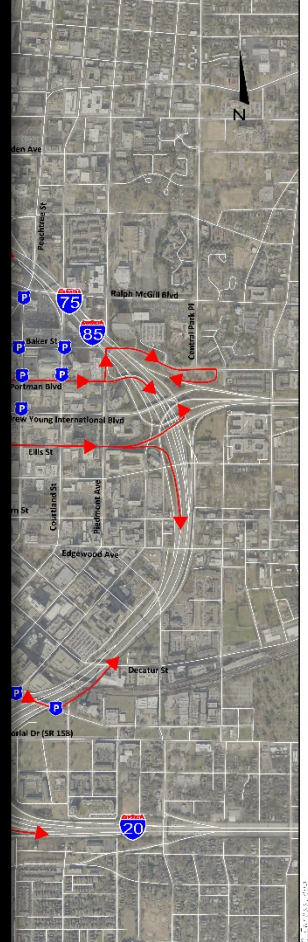
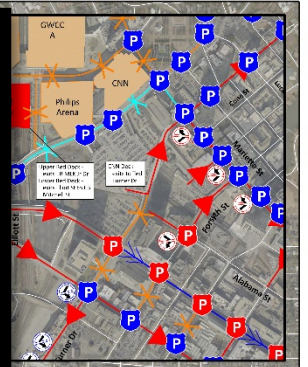
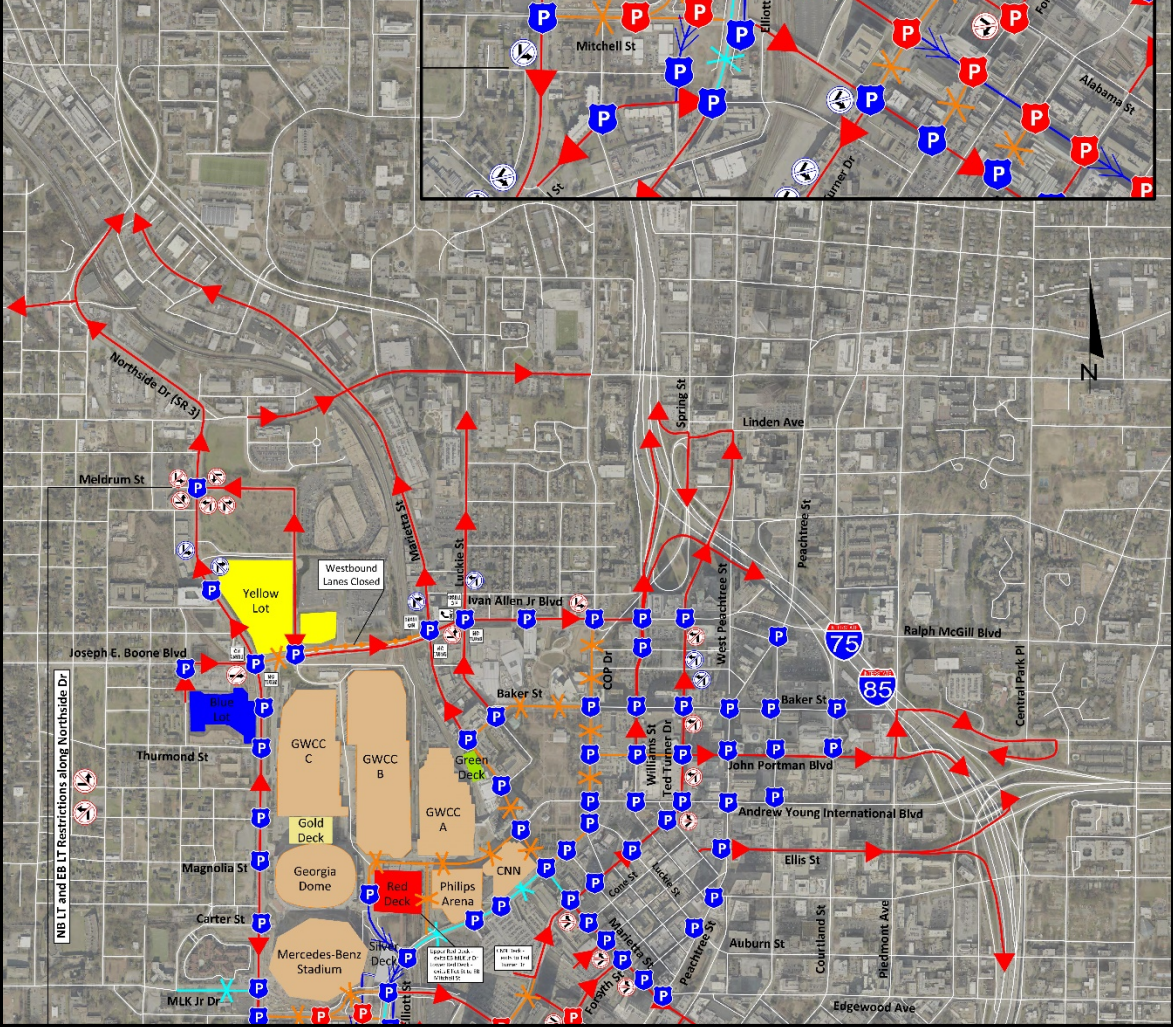


- LEGEND**
- Ingress Route
 - Closed Corridor
 - Full Contraflow Corridor
 - Rideshare Corridor Only
 - Stationed Officer(s)
 - Stationed Officer(s) - Signal in Flash



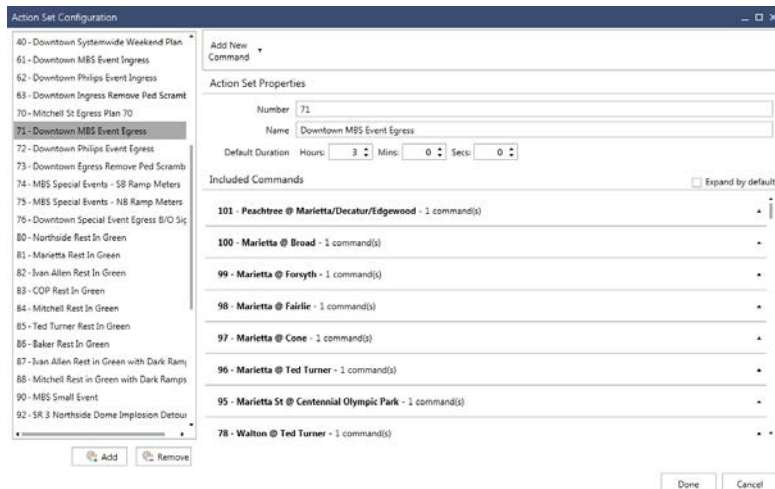
DOWNTOWN SPECIAL B
CFP NATIONAL CHAMPION

- LEGEND**
- Egress Route
 - Closed Corridor
 - Full Contraflow Corridor
 - Rideshare Corridor Only
 - Stationed Officer(s)
 - Stationed Officer(s) - Signal in Flash
 - Waze-Enforced-Only Turn Restrictions
 - Officer- & Waze-Enforced Turn Restrictions



Preparation

- Signal Timing
 - Multiple Ingress / Egress Patterns
 - Pedestrian Scrambles by TOD
 - Ped Pulses
 - Ped Holds
 - Phase Holds
 - Rest in Green Flush Plans
 - Action Sets



Pedestrian Scramble



Pedestrian Holds






Preparation

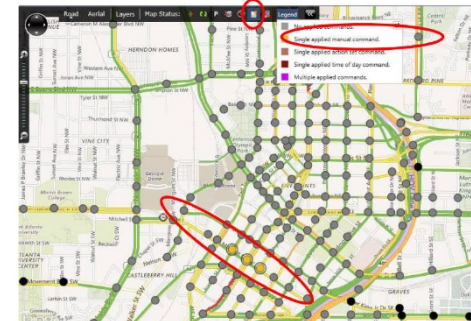
- Signal Timing
 - Multiple Ingress / Egress Patterns
 - Action Sets
 - Pedestrian Scrambles by TOD
 - Ped Pulses
 - Ped Holds
 - Phase Holds
 - Rest in Green Flush Plans

- Training / SOP



Special Events SOP

11. Check to see if any intersections are running in free/flash (that aren't set to run in flash/officer control per Egress plan), and address in field ASAP if critical.
 - a. Hover over intersection that has an "alarm" 
 - b. Look for flash alarm 
12. Check to see if any intersections do not have communication, and address in the field ASAP if critical
 - a. Look for grey icon 
 - b. May require a 4G router reset and/or controller reset
13. If large scale plan push downs are required, utilize Action Sets (Device Control > Action Set Control)
 - a. Add Action Set, set start and end time
 - i. 61 – Downtown Special Event Ingress
 1. Call up Ingress early at all intersections
 2. Extend Ingress past scheduled end time
 - ii. 71 – Downtown Special Event Egress
 3. Call up Egress early at all intersections
 4. Extend Egress past scheduled end time
 - a. **If it's a late game and Egress extends past midnight, MUST call up this action.**
 - iii. 80-88 – Rest in Green Plans for corridors
 5. **Do not** set for longer than 6 minutes (two cycles)
 6. Action 87 and 88 are to disable ramp meters at Williams Street and MLK St during Ivan Allen and Mitchell St Rest in Green plans
14. If you push down a Manual Plan or Action Set, be certain to double check Applied Command Status to see where commands are applied



Updated: 3/14/2018

Page | 4

Gameday!!

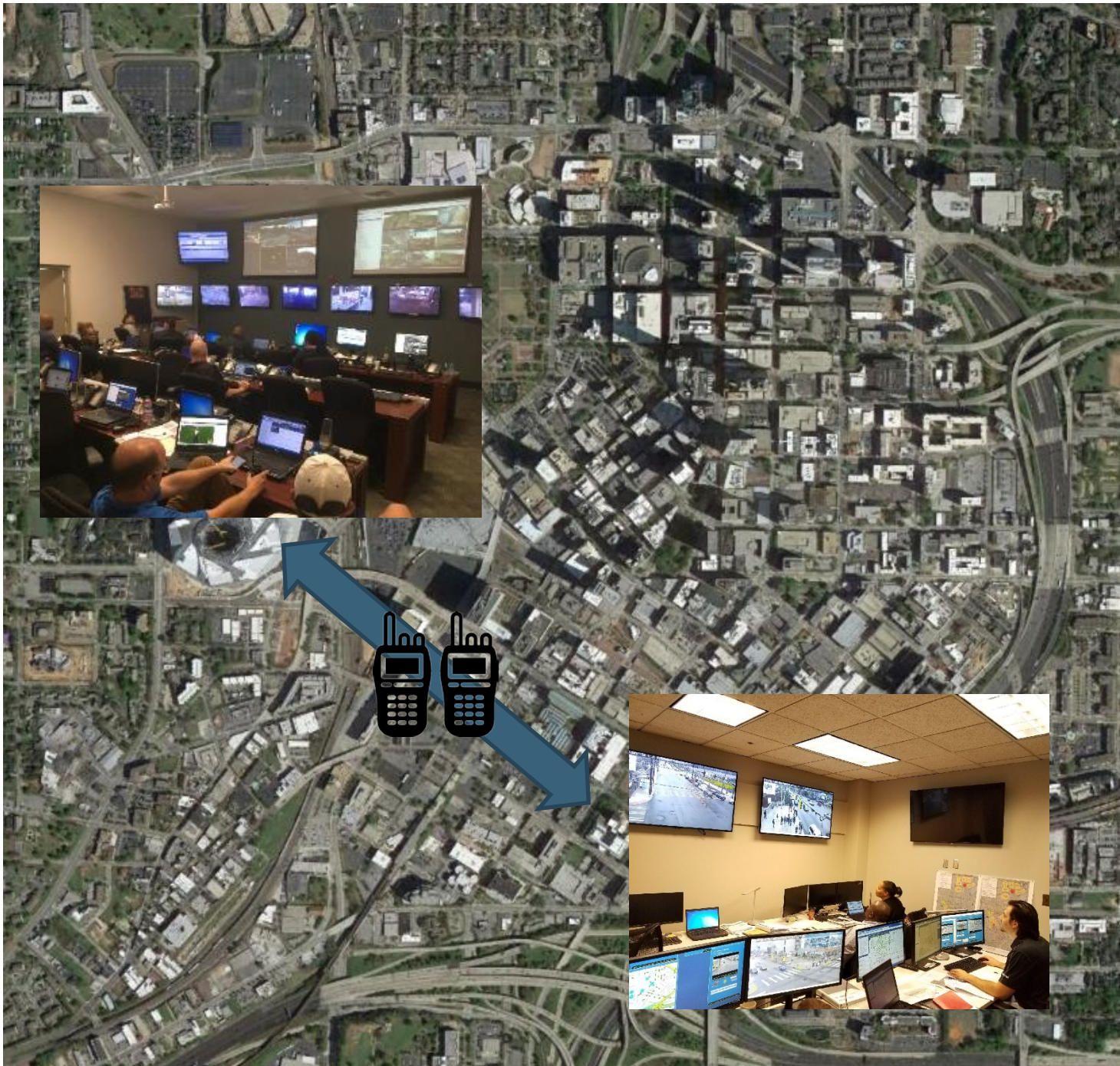



GEORGIA
WORLD
CONGRESS
CENTER




Mercedes-Benz
STADIUM







Google Earth

Timeline

- ~12:00 – Begin monitoring Ingress operations
 - Staff at GDOT TMC
 - D7 at JOC
 - DTOP/RTOP “boots on the ground”
 - Anticipated closures for POTUS at ~18:15
- 12:00 – 17:00 – Everything is awesome!!!!
- 17:00 – 17:15 – Hmm, something funny is happening on Northside... but who cares, everything is awesome!!



Timeline

- 17:15 – Northside (and soon after, Ivan Allen) is fully cleared, closed and shutdown for President's motorcade
 - One hour before it was supposed to happen
- 17:39 – Northside @ Ivan Allan closure remains, but police beginning allow passenger vehicles through 20 at a time
- 17:53 – Gate 1 shut down for POTUS. Northside peds being pushed away from MBS, and diverted to other gates

Time

SPORTS LA TIMES

Scene outside



By DAVID WHARTON



Fans wait outside Mercedes-Benz Stadium in Atlanta on Jan. 8. (Christian Petersen / Getty Images)

Ninety minutes before kickoff, the scene outside Mercedes-Benz Stadium was a sea of red and white.

Irate Alabama and Georgia fans wait hours in rain for national championship

Updated Jan 9, 2018; Posted Jan 8, 2018



Fans wait in the rain to enter the Mercedes-Benz Stadium in Atlanta for the College Football Playoff national championship. (AP)

128     0 shares

By [Joseph Goodman](#), jgoodman@al.com

Thousands and thousands of soaking wet and irate Alabama and Georgia fans waited for up to two hours in the rain to enter Mercedes-Benz Stadium on Monday for the College Football Playoff National Championship game.

s on chaos



Timeline

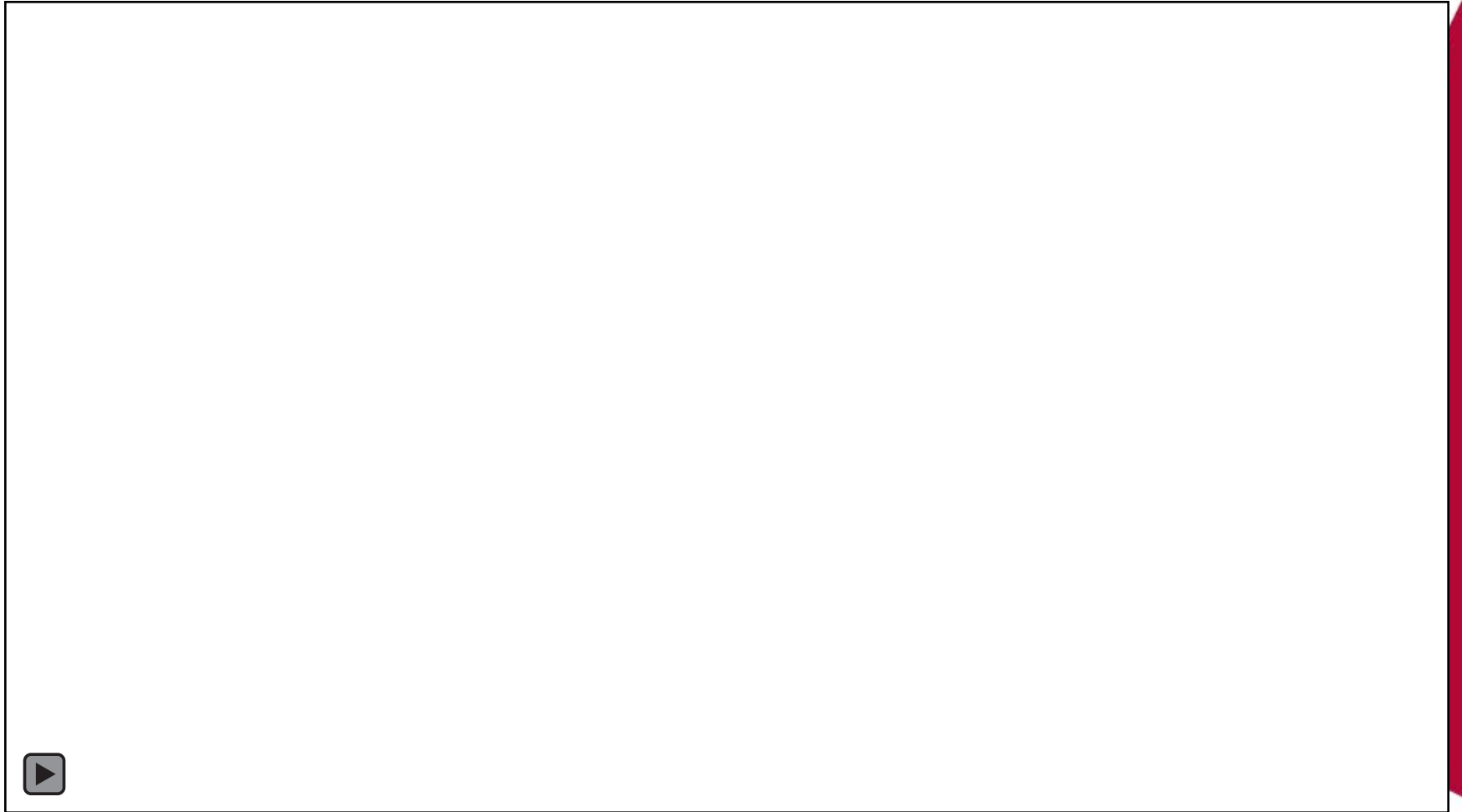
- 18:06 – Northside and Ivan completely shutdown
- 18:08 – Interstate ramps start being closed
- 18:23 – POTUS on interstate
- 18:33 – POTUS exits interstate



Timeline

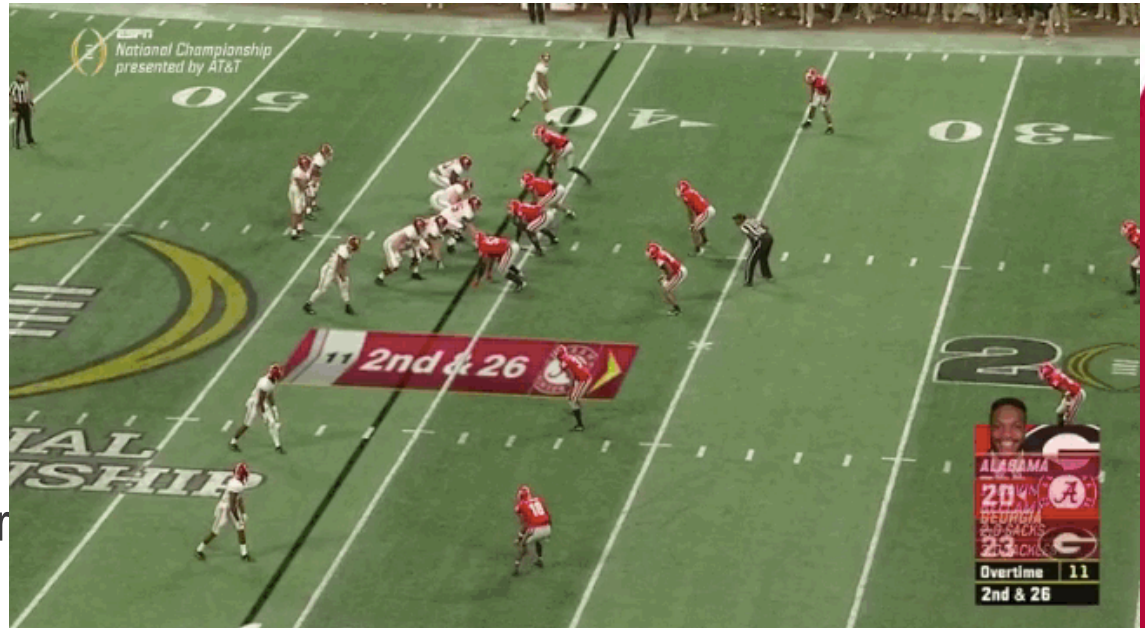
- 18:36 – Interstate reopened
- 18:41 – Gate 1 reopened
- 18:48 – Northside reopened
- 18:48 – 19:33 – Insanity
- 19:33 – Visual confirmation of clear roads
- 20:00 – Pregame beings...

GAMETIME!!



Egress

- ~22:43 ...
- 00:10 – Game over...
- 00:40 – Champions ceremony
- 01:19 – MLK contraflow removed
- 01:40 – Officers pulled from street; Northside, Marietta, COP, Mitchell visually confirmed clear
- 02:00 – Last rest in green flush on Ivan Allen

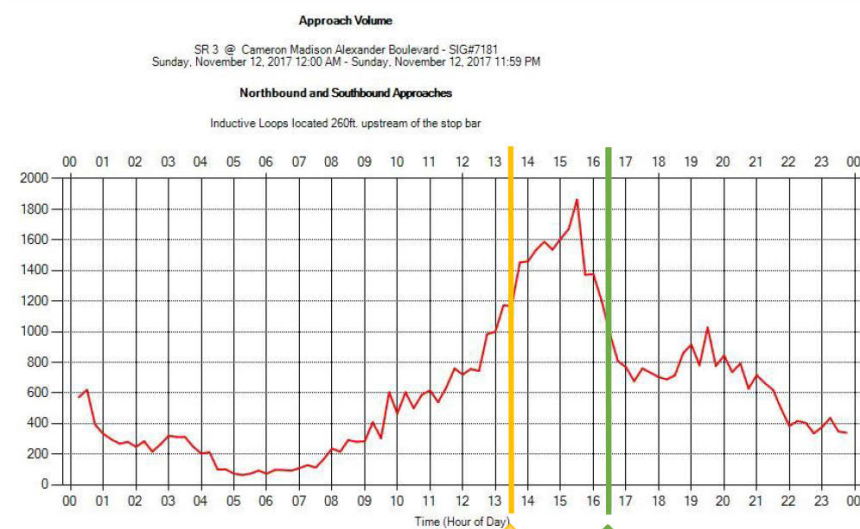


Data

SR 3 @ Cameron Madison Alexander Blvd

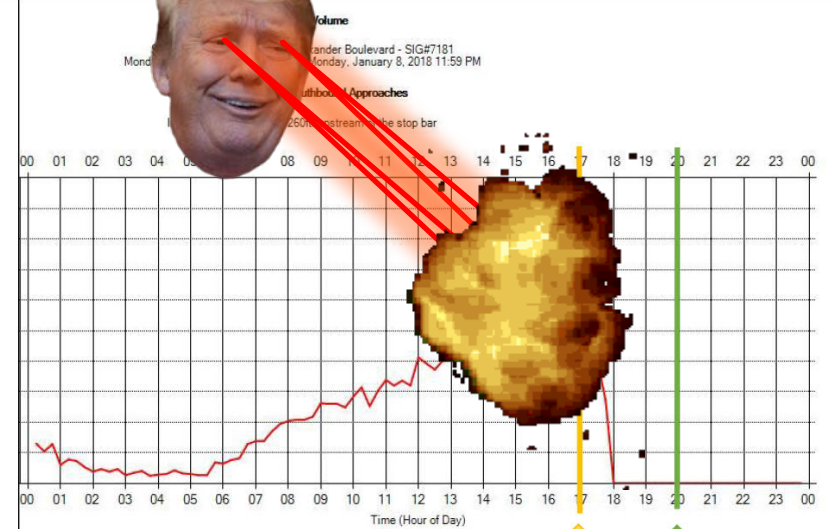
Cowboys vs. Falcons

College Football Championship



4:25 Start Time

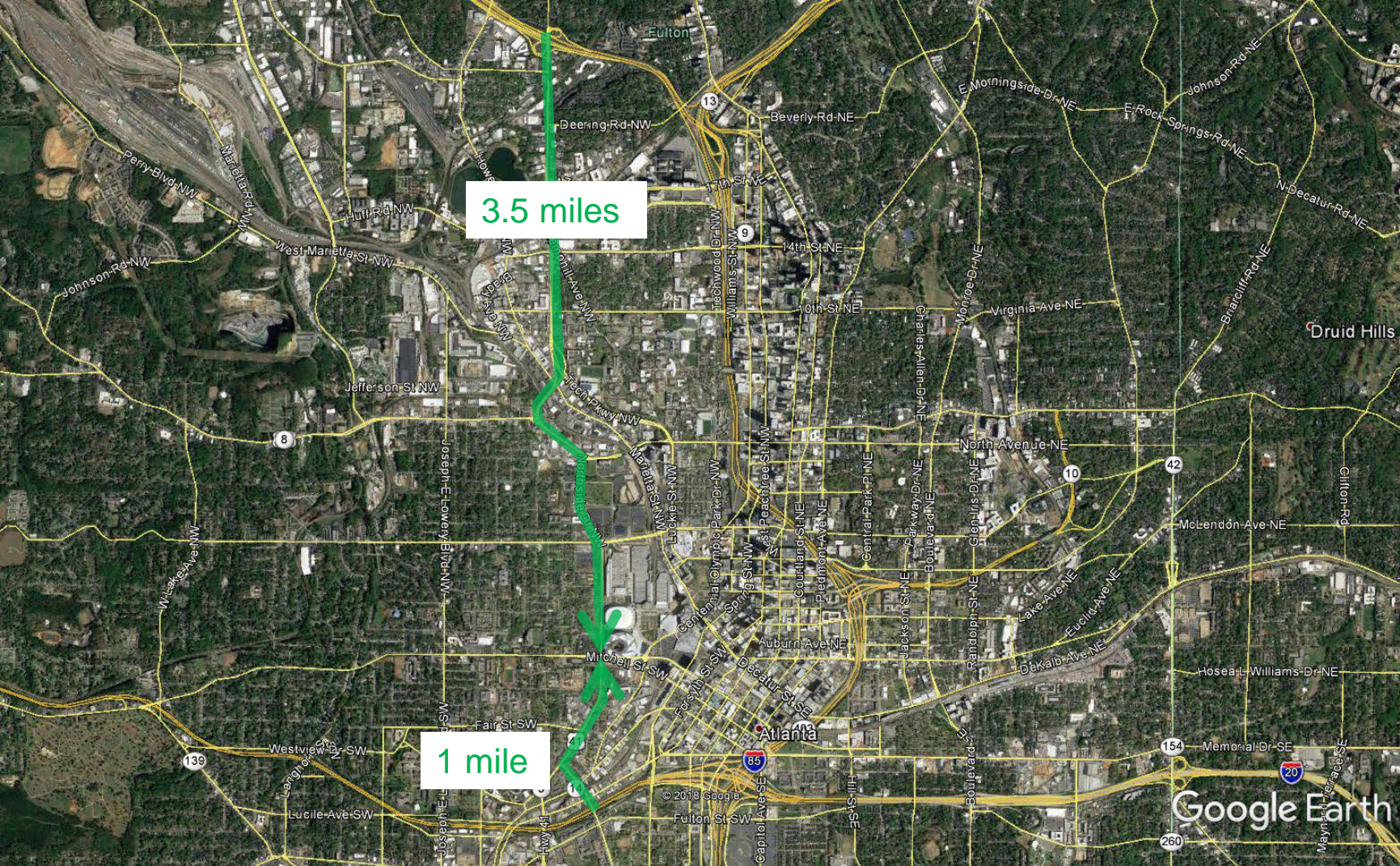
Flow Rate = 1,200 vph



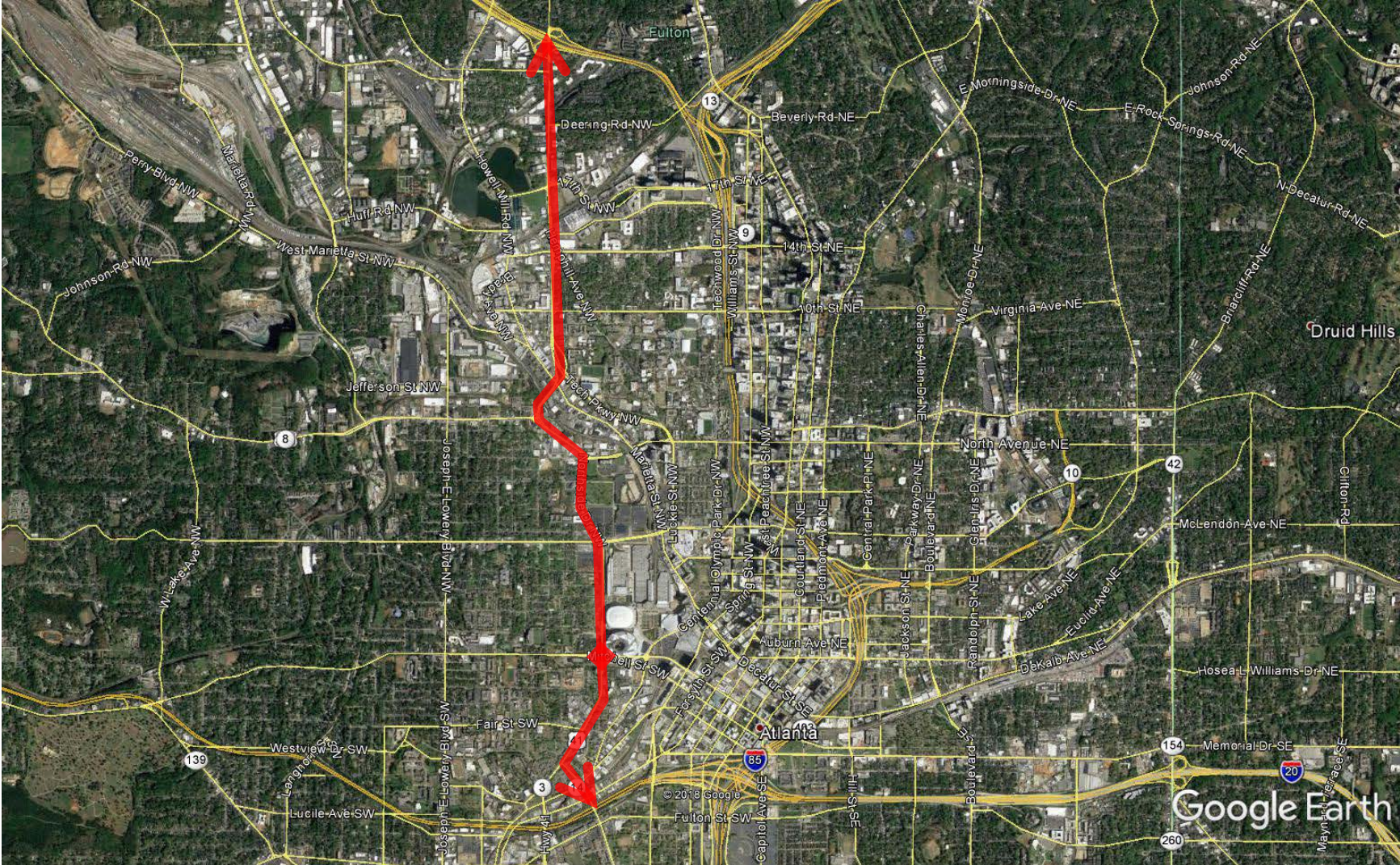
8:00 Start Time

Flow Rate = 1,300 vph @ 15:00

RITIS Analysis



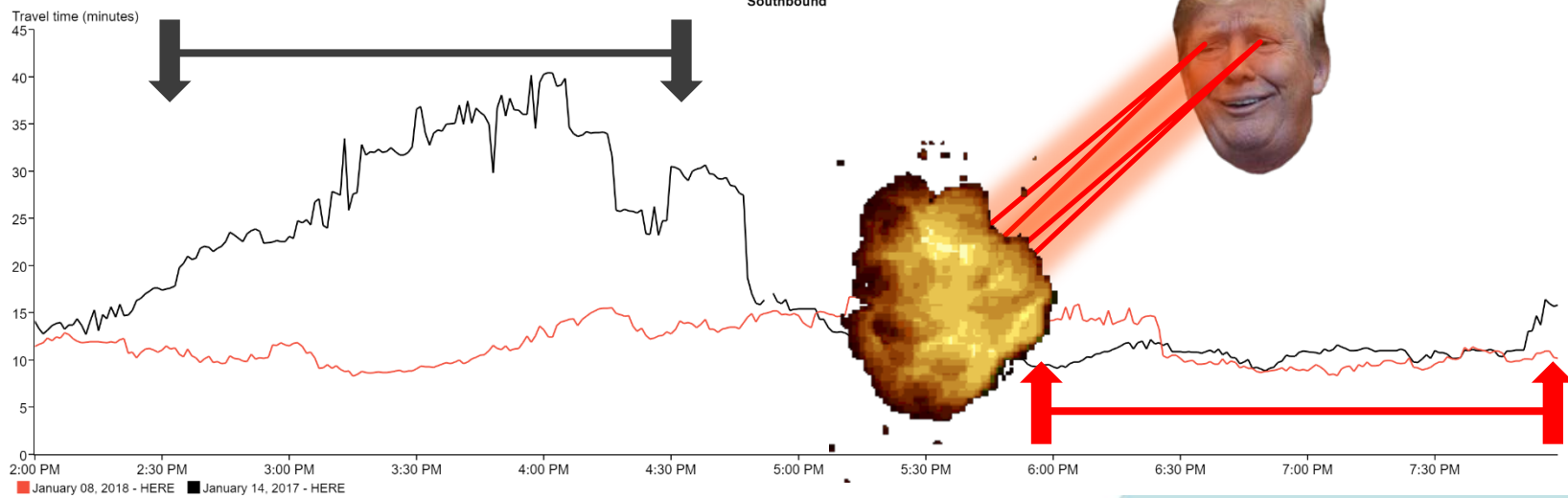
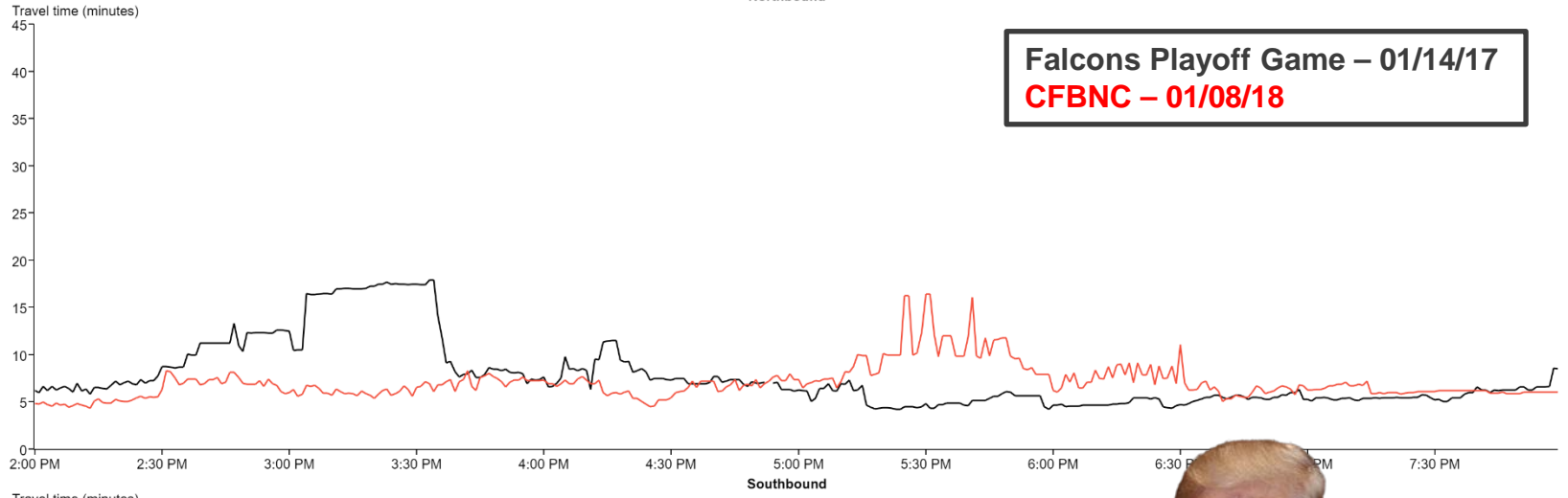
RITIS Analysis



RITIS Analysis

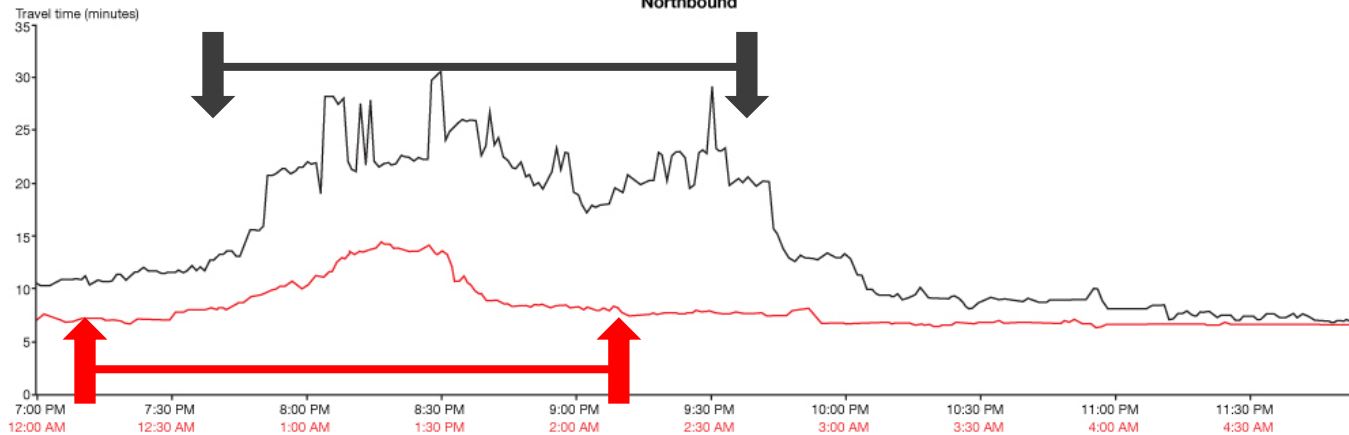
Comparison 4 Northside Ingress Travel Time
Averaged per minute for January 14, 2017 and January 08, 2018
Northbound

Falcons Playoff Game – 01/14/17
CFBNC – 01/08/18

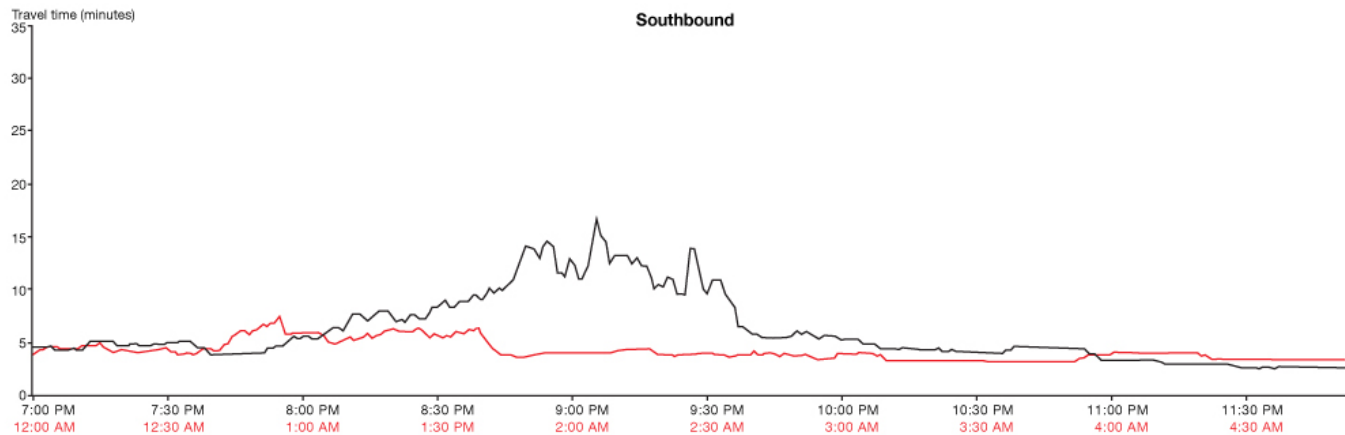


RITIS Analysis

01_14_17 Northside Egress Travel Time
Averaged per minute for January 14, 2017
Northbound



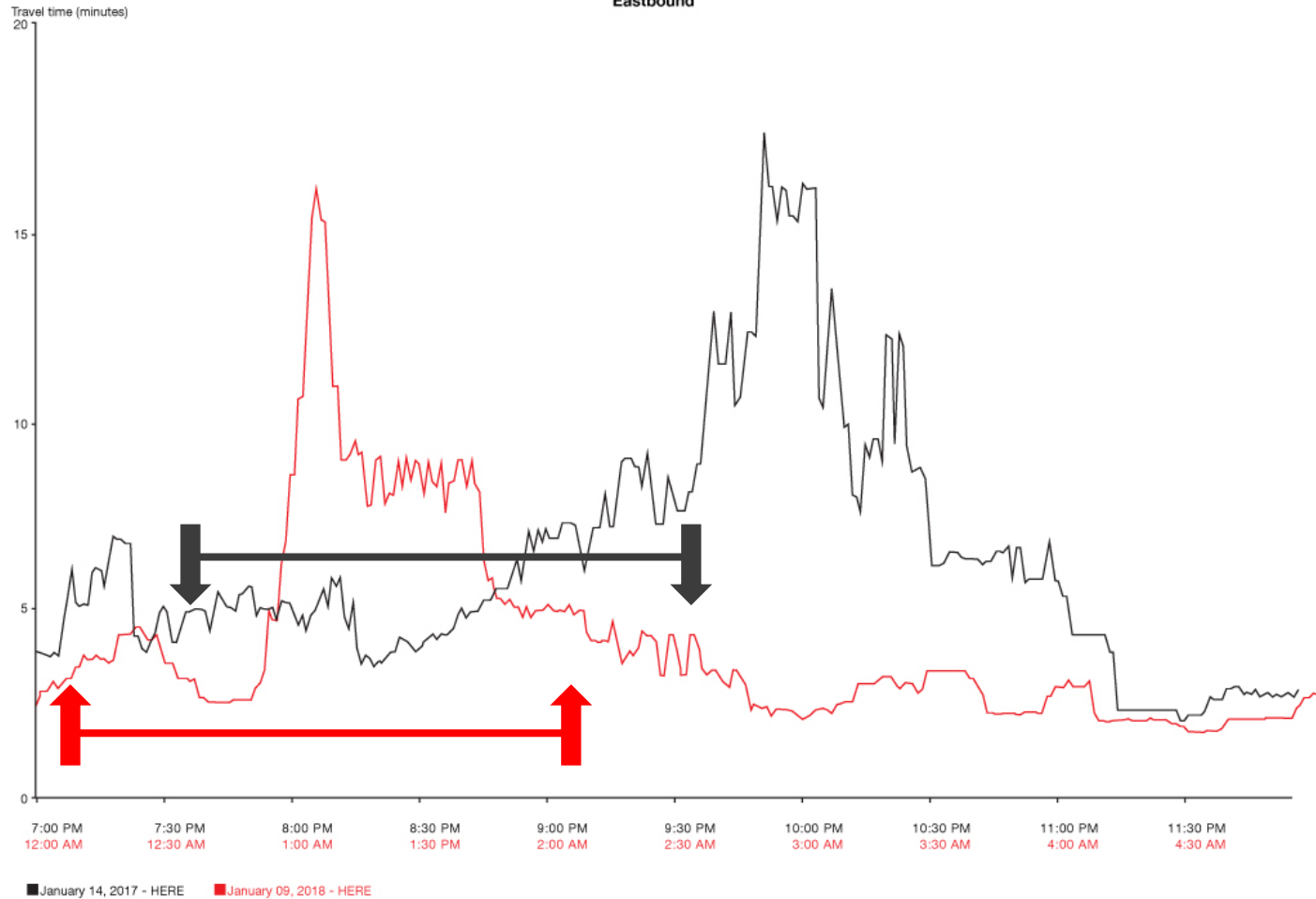
Southbound



■ January 14, 2017 - HERE ■ January 09, 2018 - HERE

RITIS Analysis

01_14_17 Ivan Allen Egress Travel Time
Averaged per minute for January 14, 2017
Eastbound



What's Next??



Questions?

