



NAVIGATOR

***Then & Now***

June 29, 2016

- ***The building***



# Groundbreaking ceremony – Sept 13, 1994





# Then



# Now





# Then



# Now



# Then



# Now





# Then



This pic taken just as TMC was completed

# Now





# Then



# Now





# Then

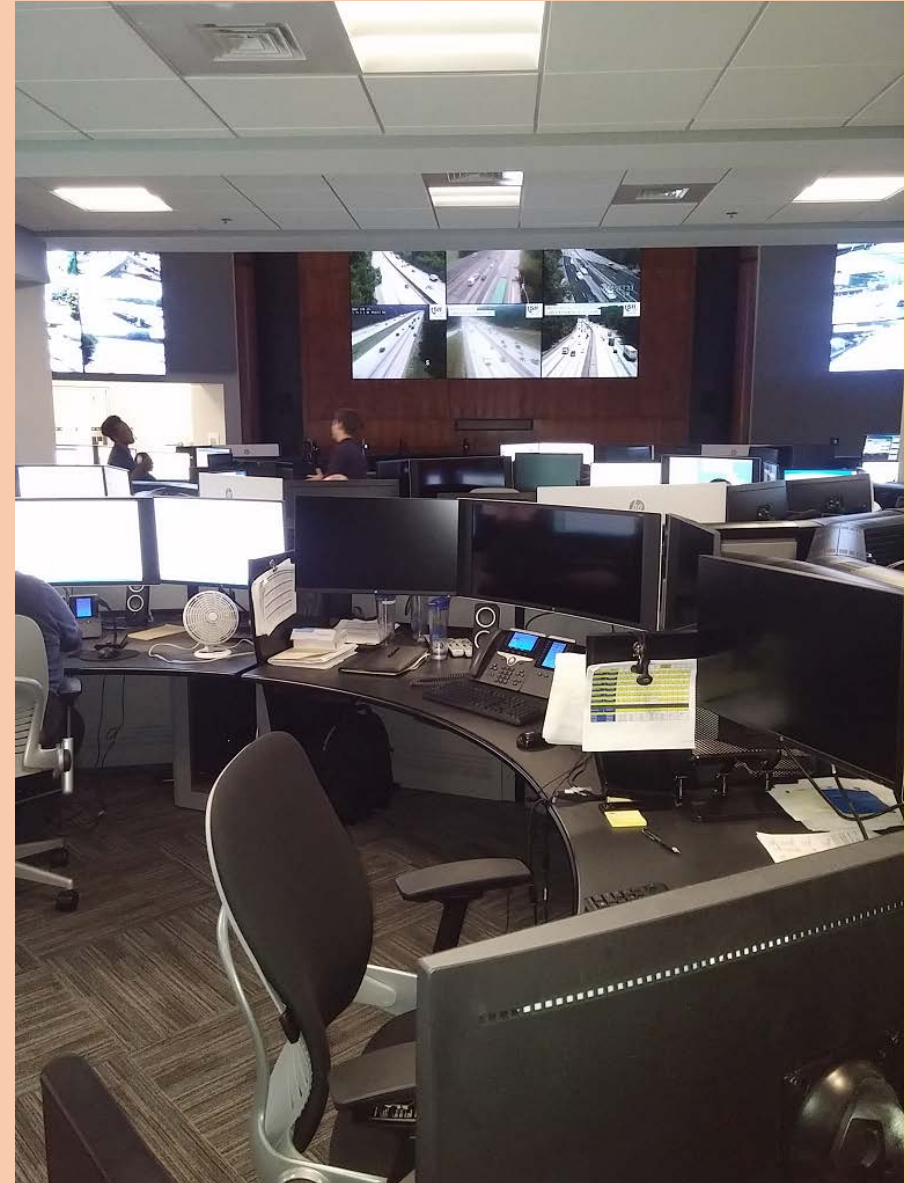


Pic showing trunk fiber coming in from street

# Now



- ***The interior***





# Then



# Now



# Then



# Now





# Then



# Now





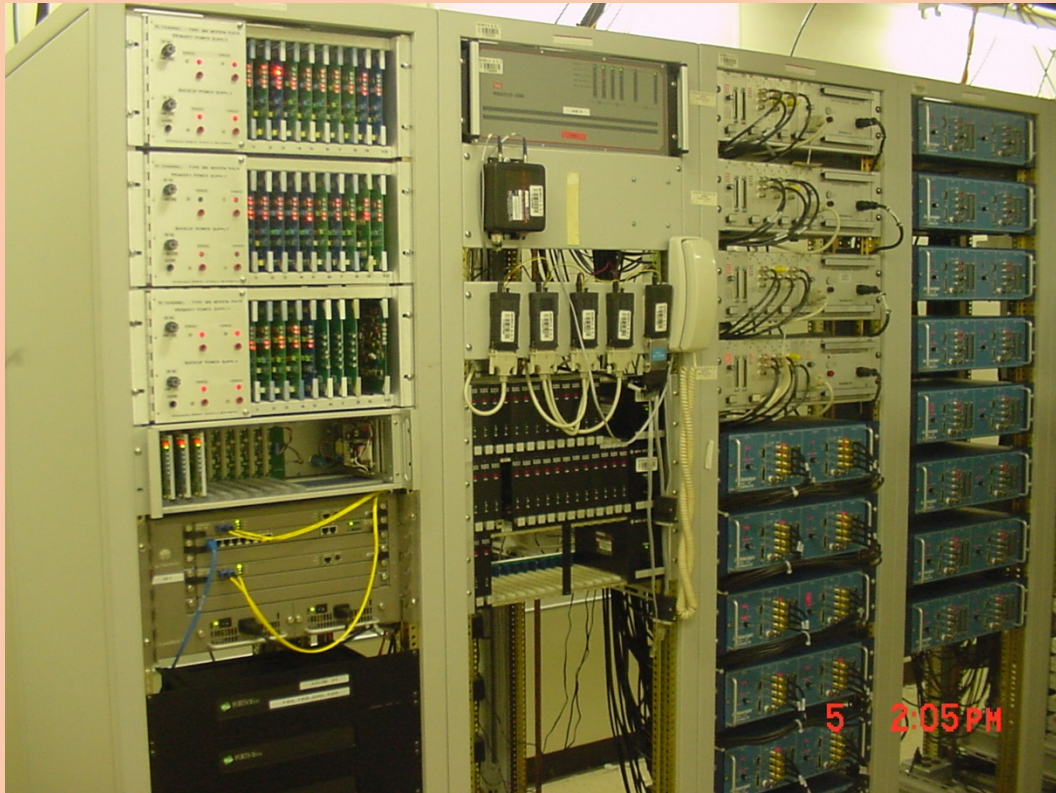
# Then



# Now



# Then

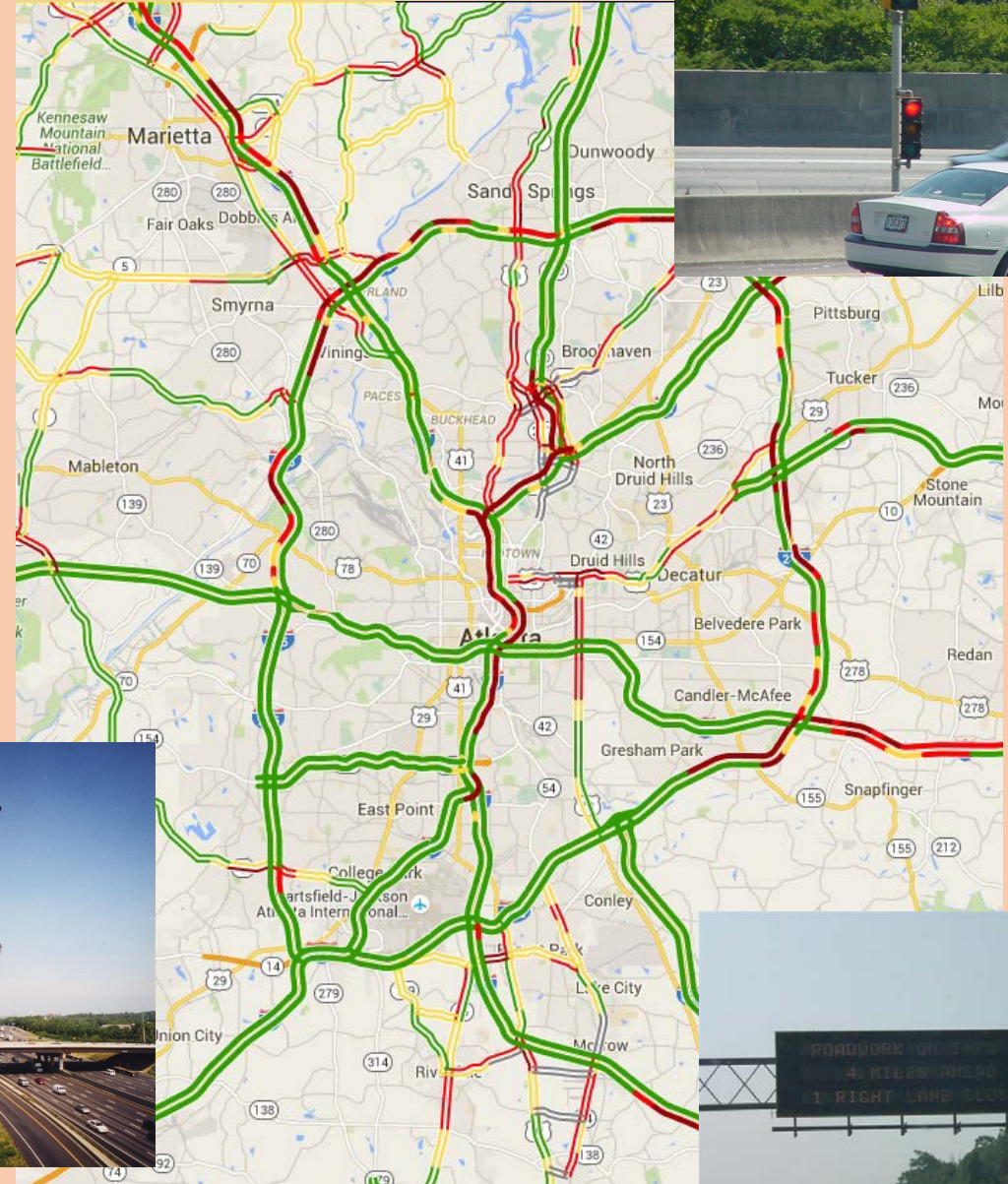


# Now

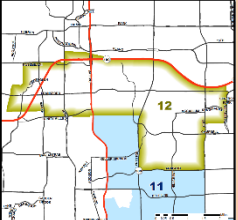




- ***The system***

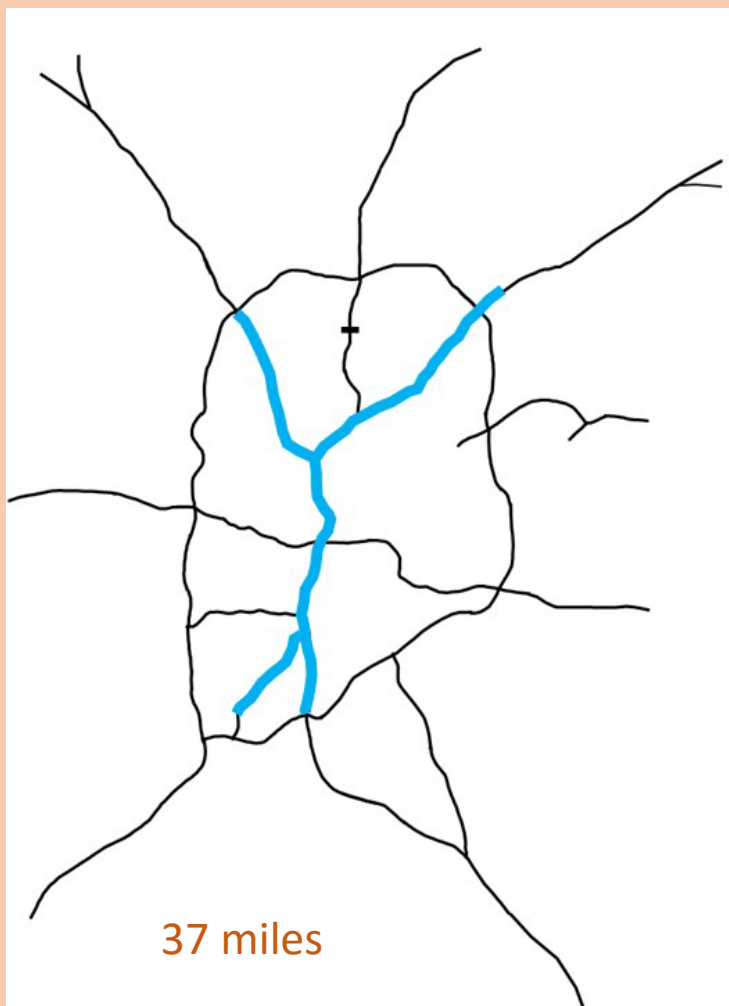




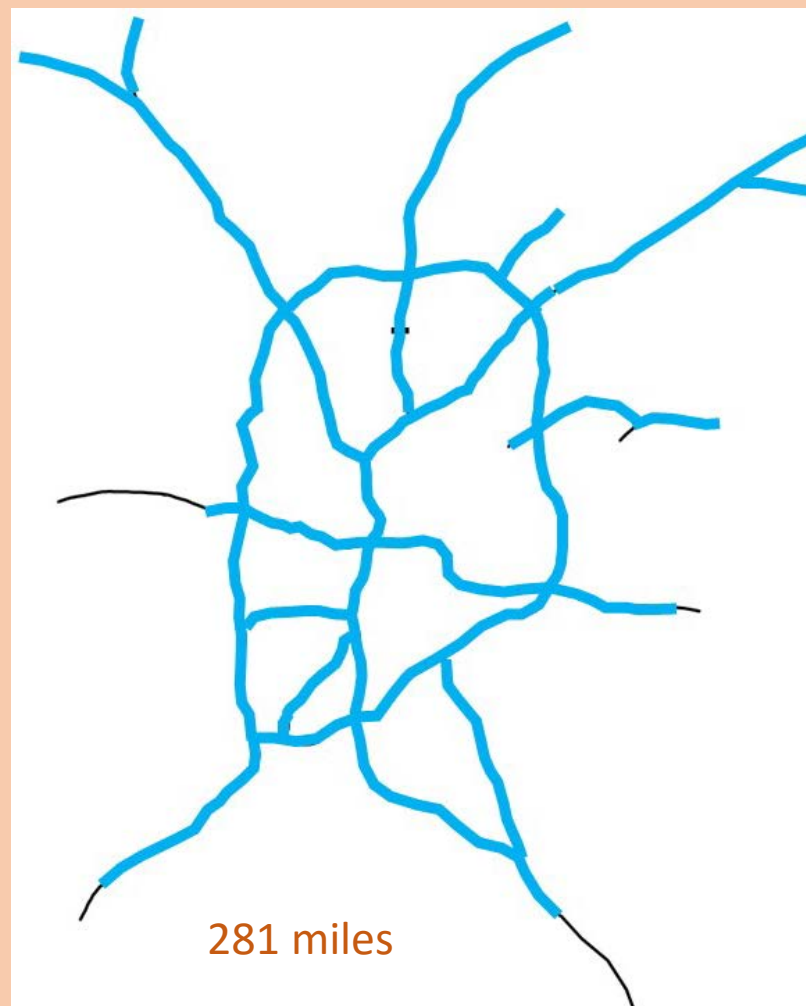


# ITS Coverage

## Then



## Now





# Cameras

**Then**

90

**Now**

660

Plus 787 local city/county





# Message Signs

**Then**

24

**Now**

169



# Ramp Meters

**Then**

5

**Now**

180





# HEROs

**Then**

10

**Now**

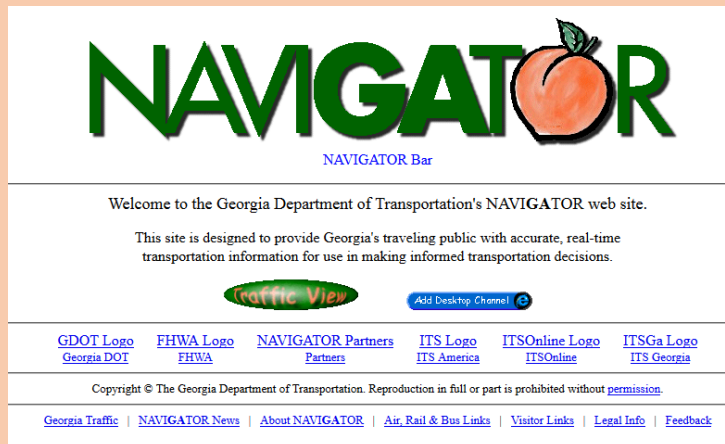
110



# Other System Components

## Then

- \*DOT phone system
- Bulletin Board System
- Traffic Television Channel
- [www.georgia-navigator.com](http://www.georgia-navigator.com)



## Now

- Variable Speed Limit Signs: 176
- Flex Shoulder Lanes
- RTOP program
- [www.511ga.com](http://www.511ga.com) - Twitter – 511- Facebook
- Apps for Smartphones
- Streaming Video to Public
- Express Lanes on the way



- ***The technology***



# CCTV cameras

**Then**



**Now**



# Message Signs

## Then



## Now





# Video Transport

Then



Now



# Detection Systems

Then



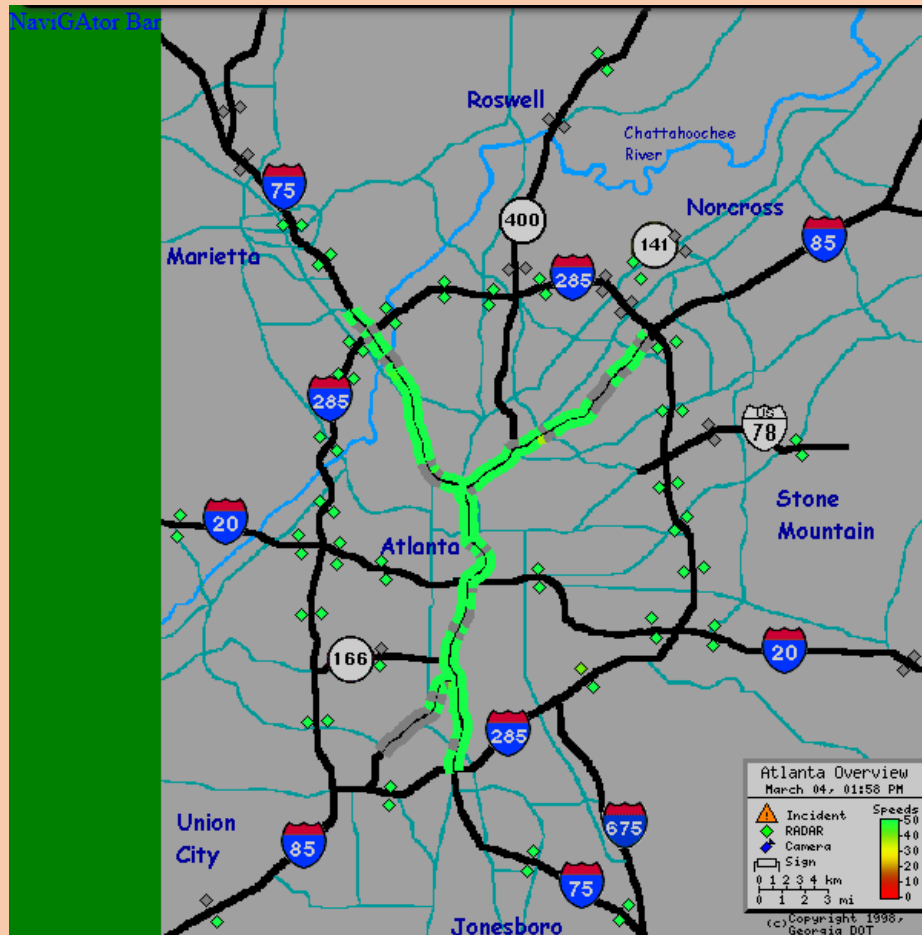
Now



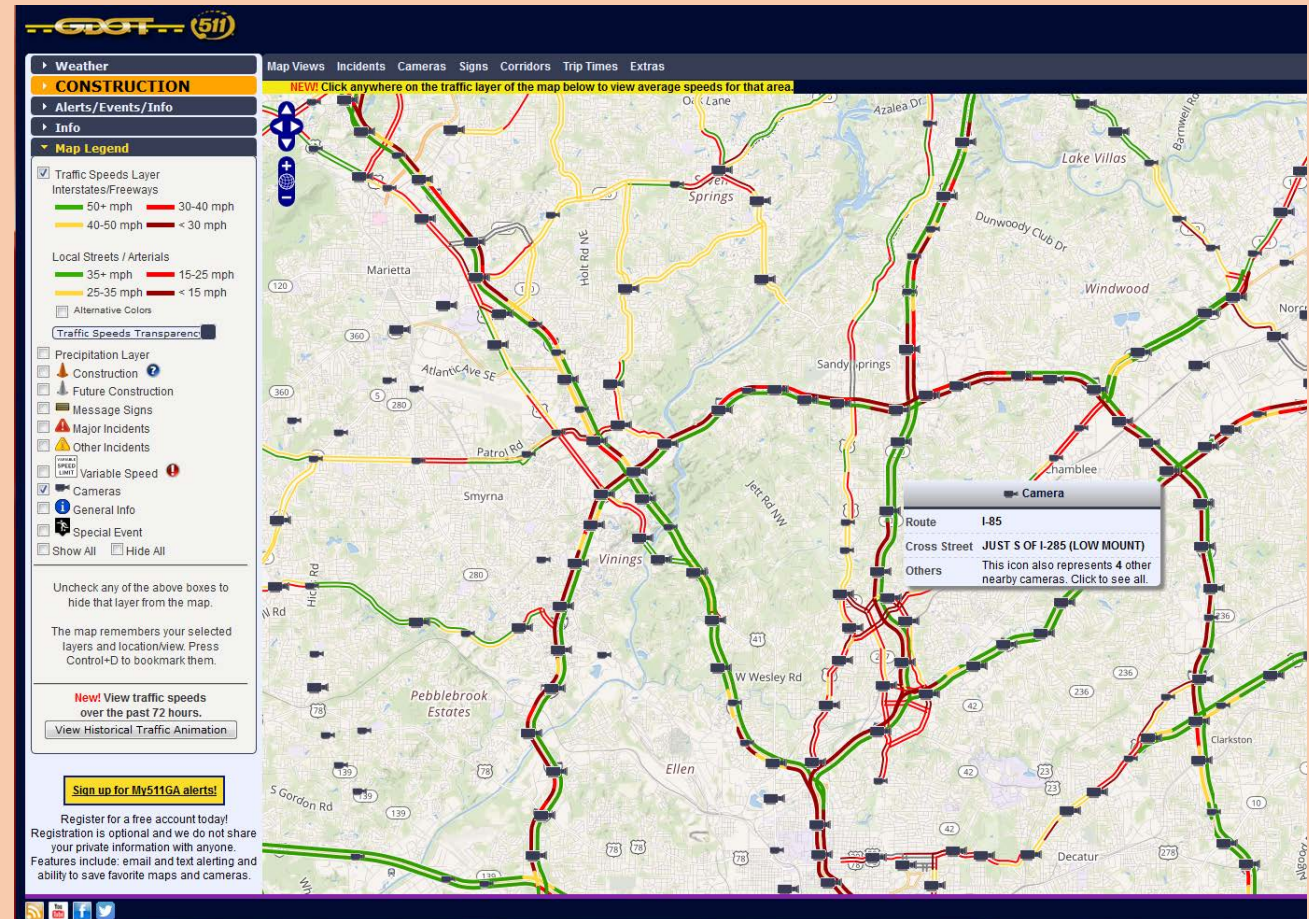


# Navigator Webpage

## Then



## Now





- ***The people***

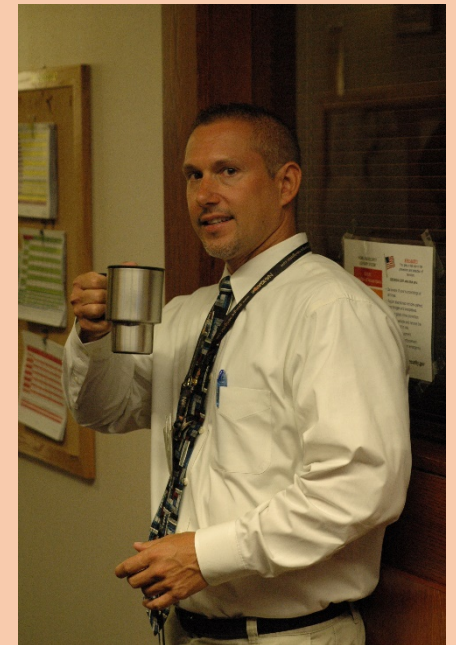


- **The people**





- # The people



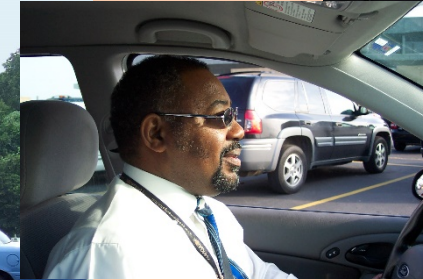


- # The people





- # The people





- # The people





# • The people





- **The people**

