

# SR 9 ATMS Project Concept Phase

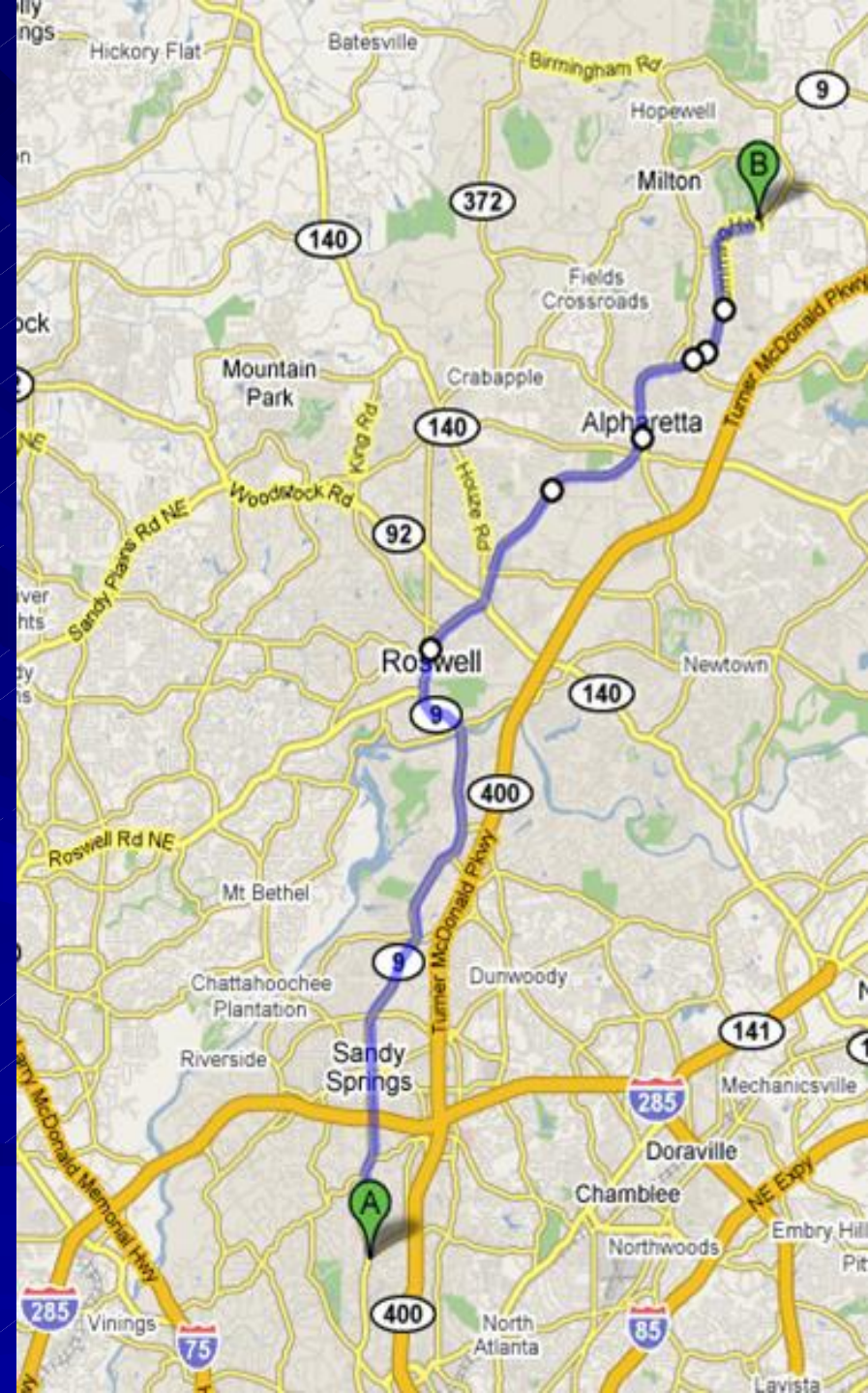


in association with Gresham Smith & Partners


October 20, 2008

# Project Limits


- 22 miles
- South Sandy Springs City Limits to Forsyth County Line



# Concept Phase Activities

- |    |                                       |  |
|----|---------------------------------------|--|
| 1. | Concept of Operations                 | Complete   |
| 2. | Environmental Screening               | Complete   |
| 3. | Community Outreach                    | In-progress  |
| 4. | Concept Alternatives / Prioritization |  |
| 5. | GDOT Concept Report                   |  |
| 6. | Concept Design                        |  |
| 7. | Inventory Database                    |  |

# Concept Phase Activities

- |    |  |  |
|----|--|--|
| 1. | <b>Concept of Operations</b>                 | Complete   |
| 2. | Environmental Screening                      | Complete   |
| 3. | Community Outreach                           | In-progress  |
| 4. | <b>Concept Alternatives / Prioritization</b> |  |
| 5. | GDOT Concept Report                          |  |
| 6. | Concept Design                               |  |
| 7. | Inventory Database                           |  |

# Concept of Operations

- Based on stakeholder input
- ConOps includes:
  - Operational needs and desires
  - Existing & Future ITS operations
  - Facilities and software
  - Personnel

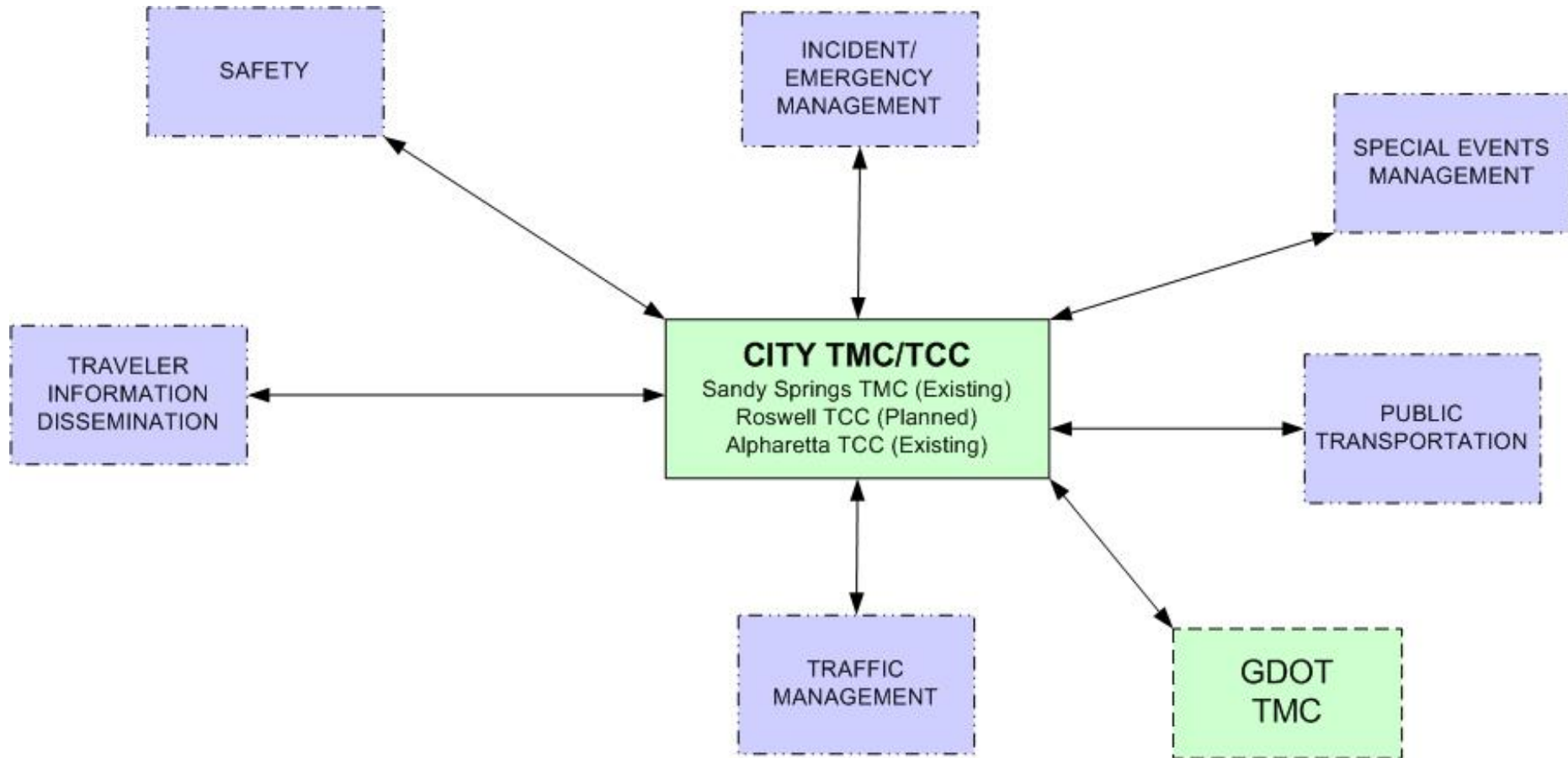
# Stakeholder Interviews

- City of Sandy Springs Public Works Dept.
- City of Sandy Springs Police and Fire Depts.
- City of Roswell Department of Transportation
- City of Roswell Police and Fire Depts.
- City of Alpharetta Traffic Dept.
- City of Alpharetta Police Dept.
- Georgia DOT

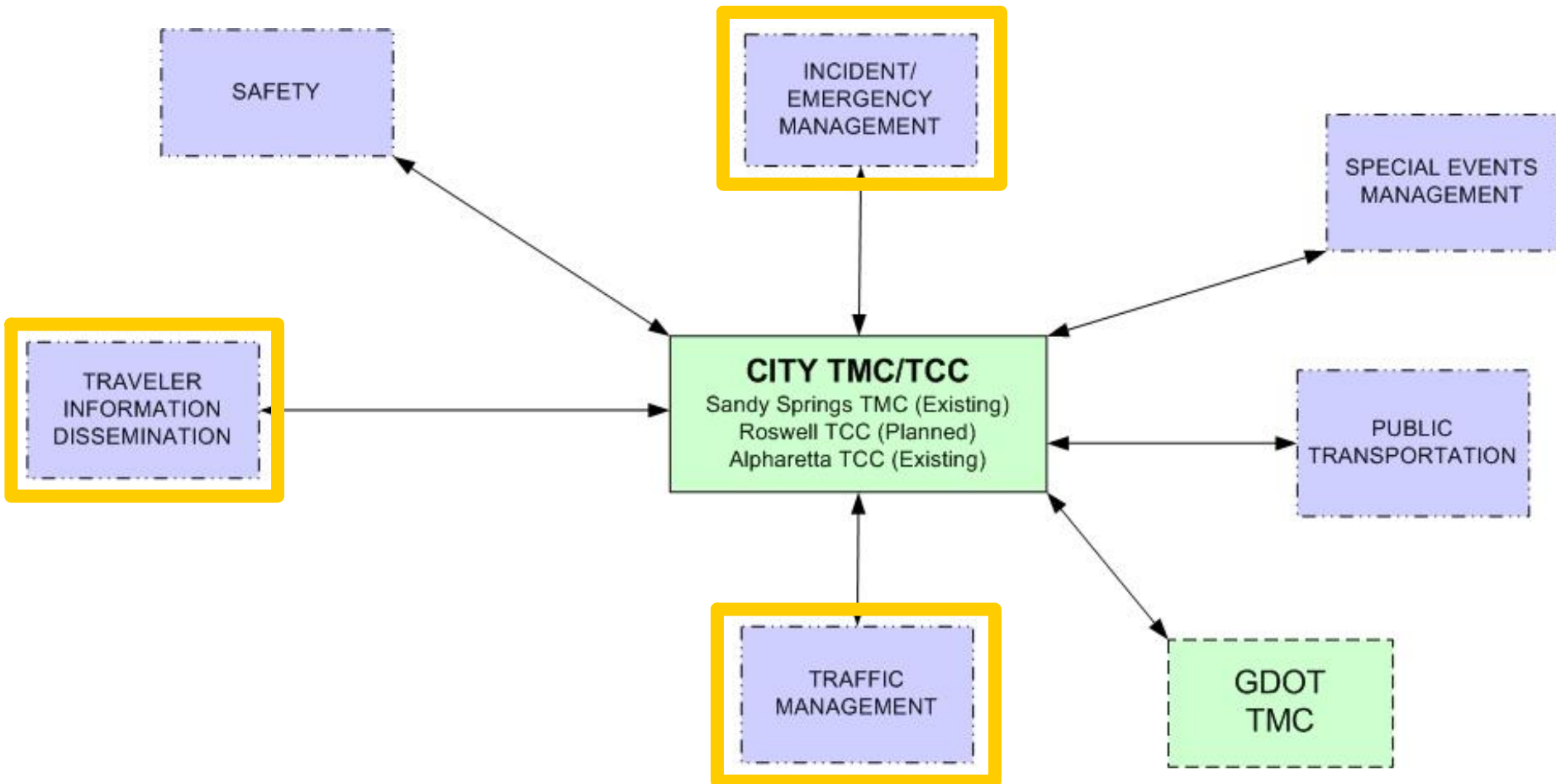
# Shared Mission

- Balance the flow of traffic using or crossing the SR 9 corridor safely and efficiently
- Manage incidents and special events along the SR 9 corridor
- Facilitate communication to incident responders and the public

# ATMS User Services



# ATMS User Services



# Traffic Management Needs

- Communication along the corridor
- Signal timing coordination with Sandy Springs and Roswell
- Management of maintenance and construction activities
- Reversible Lane System (RLS)

# Traffic Management Solutions

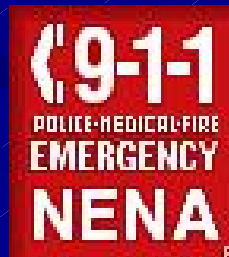


**Adaptive Signal Timing**

# Incident and Emergency Management Needs

- Faster response
- Increased on-site responder safety
- Faster clearance
- Less impact on traffic
- Alternate timing plans

# Incident and Emergency Management Solutions



# Traveler Information Needs

- Pre-trip and En-route information

- Needed for:

- Incidents
- Congestion
- Special Events
- Public Transportation

# Traveler Information Solutions

**Greensboro Department of Transportation**  
Official City of Greensboro Website

Residents : Businesses : Visitors : City Government : Departments

Search [ ] Go

Departments : Transportation = Traffic Info / Cameras

**Traffic Cameras**

Click on the cameras below to view streaming video from traffic cameras around Greensboro. Traffic cameras typically point west in the morning and east in the afternoon.

Map Satellite Hybrid

**Camera Name**

- I-40 @ Sandy Ridge Rd
- NC 68 / Market St
- I-40 / NC 68
- I-40 / Gallimore Dairy Rd
- I-40 / Chimney Rock Rd
- I-40 / Guilford College
- I-40 / Wendover Ave
- I-40 / Patterson St
- I-40 / Freeman Mill Rd
- I-40 / Patton Ave
- I-40 / S Elm-Eugene St

**Traffic Cameras**

- I-40 @ Sandy Ridge Rd
- NC 68 / Market St
- I-40 / NC 68
- I-40 / Gallimore Dairy Rd
- I-40 / Chimney Rock Rd
- I-40 / Guilford College
- I-40 / Wendover Ave
- I-40 / Patterson St
- I-40 / Freeman Mill Rd
- I-40 / Patton Ave
- I-40 / S Elm-Eugene St
- Wendover Ave / Distford
- Wendover Ave / Spring Garden St
- Market / College
- Friendly Ave / College Rd

08/06/2008 10:12:33 AM

Applet and MediaApplet started



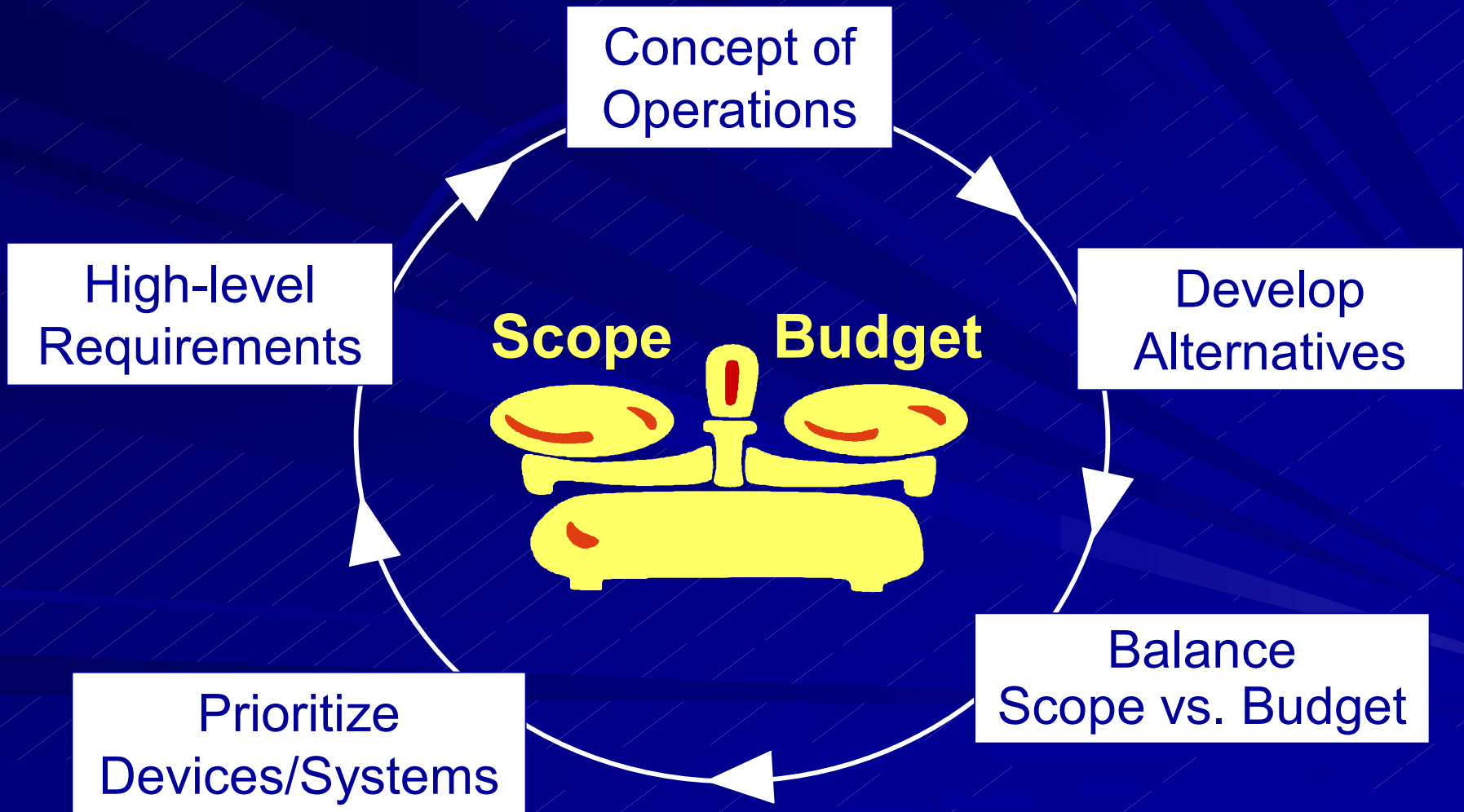
# Traveler Information Solutions



# Multi-jurisdictional Coordination

- Coordinated signal timing plans
- Emergency signal timing plans
- Develop SOPs to:
  - Share resources
  - Implement after-hours signal timing plans
- Share CCTV camera images and information
- Lane closure information shared

# Concept Alternatives



# Schedule

- |    |                              |           |
|----|------------------------------|-----------|
| 1. | Concept of Operations        | Complete  |
| 2. | GDOT Concept Report Approval | Mar. 2009 |
| 3. | Preliminary & Final Design   | Oct. 2009 |
| 4. | Let for Construction         | June 2010 |

# Questions & Answers

Agency Project Manager

**Jeff Messer**

City of Sandy Springs

[jeff.messer@sandyspringsga.org](mailto:jeff.messer@sandyspringsga.org)

770-206-2525

Consultant Project Manager

**Scott Mohler, PE**

URS Corporation

[scott\\_mohler@urscorp.com](mailto:scott_mohler@urscorp.com)

678-808-8811

